

Westcountry CSI: Citizen Science Investigations

Training Pack 3: Useful Resources





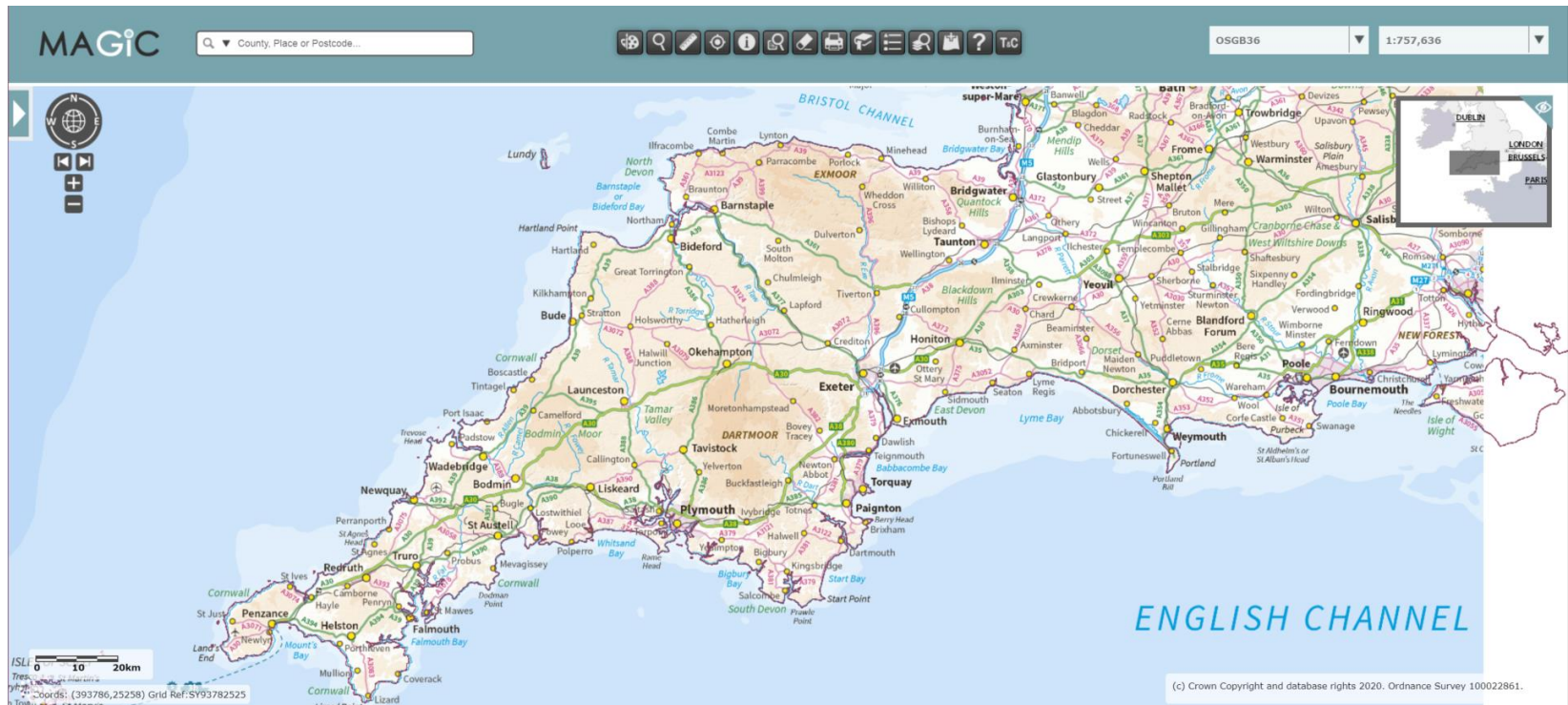
Deciding when and where to sample can be tricky – this training pack includes some useful resources to help with this decision.

Use these resources alongside ‘Training Pack 1: Experimental Design & Monitoring Strategy’ to collect some really useful data.

Where should I survey?

Magic Map – Online OS mapping

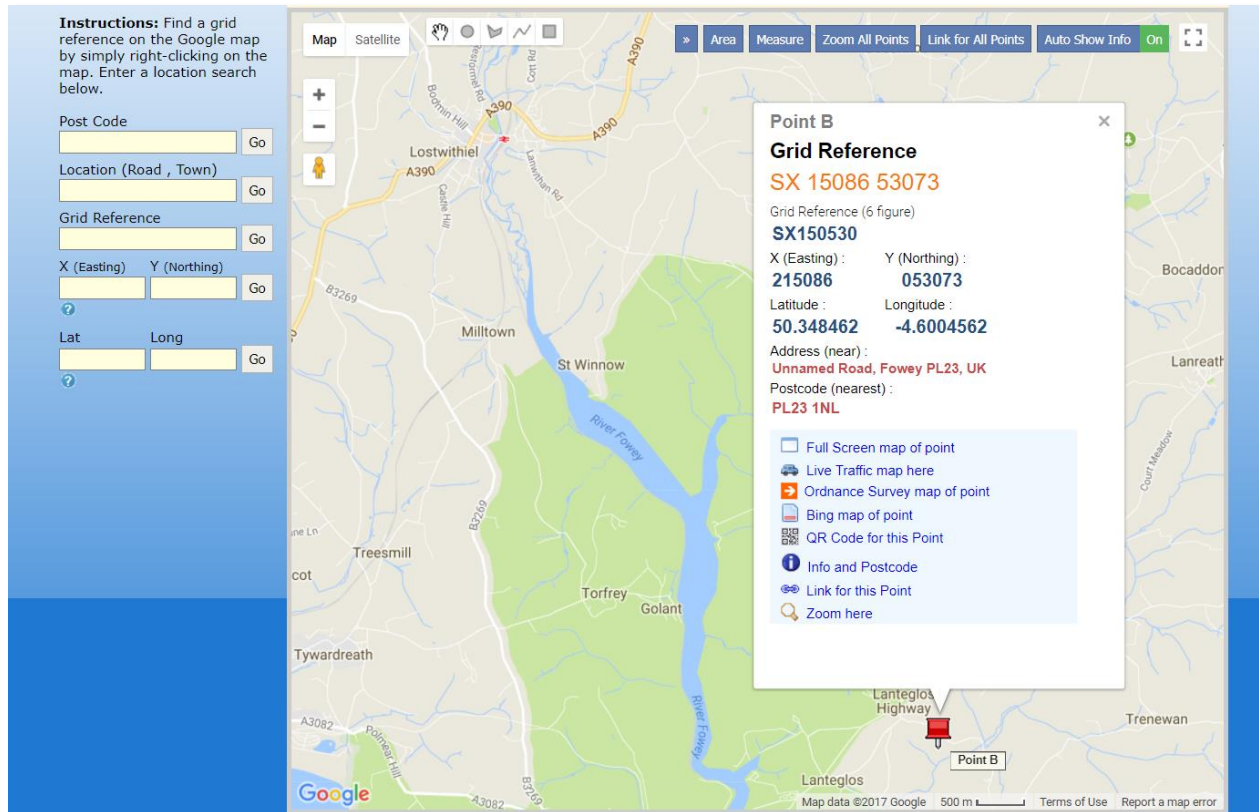
Magic Map has an Ordnance Survey basemap feature. Use this to find places where footpaths or lanes cross rivers, and therefore provide a good place to access the river for sampling.



Where should I survey?

Grid Reference Finder

Using Grid Reference Finder, you can find out the coordinates of any location in a variety of formats.



Instructions: Find a grid reference on the Google map by simply right-clicking on the map. Enter a location search below.

Post Code Go

Location (Road , Town) Go

Grid Reference Go

X (Easting) Y (Northing) Go

Lat Long Go

Point B

Grid Reference
SX 15086 53073

Grid Reference (6 figure)
SX150530

X (Easting) : Y (Northing) :
215086 053073

Latitude : Longitude :
50.348462 -4.6004562

Address (near) :
Unnamed Road, Fowey PL23, UK

Postcode (nearest) :
PL23 1NL

- Full Screen map of point
- Live Traffic map here
- Ordnance Survey map of point
- Bing map of point
- QR Code for this Point
- Info and Postcode
- Link for this Point
- Zoom here

Map data ©2017 Google 500 m Terms of Use Report a map error

Note: you can also automatically enter the grid reference of your sampling location by clicking the map in Cartographer when you upload your survey.

Where should I survey?

[Environment Agency Catchment Data Explorer](#)

This website has details of ongoing Environment Agency monitoring, and is a good way to understand how rivers and streams fit together to form a catchment.

Dart Start Bay and Torbay
Operational Catchment

- Summary
- Classification search
- Objectives search
- Reasons for not achieving good
- Measures

Download Classification Data Download Measures Data
Download Reasons for not Achieving Good Data Download Objectives Data
Download water body to protected area links data

No image available

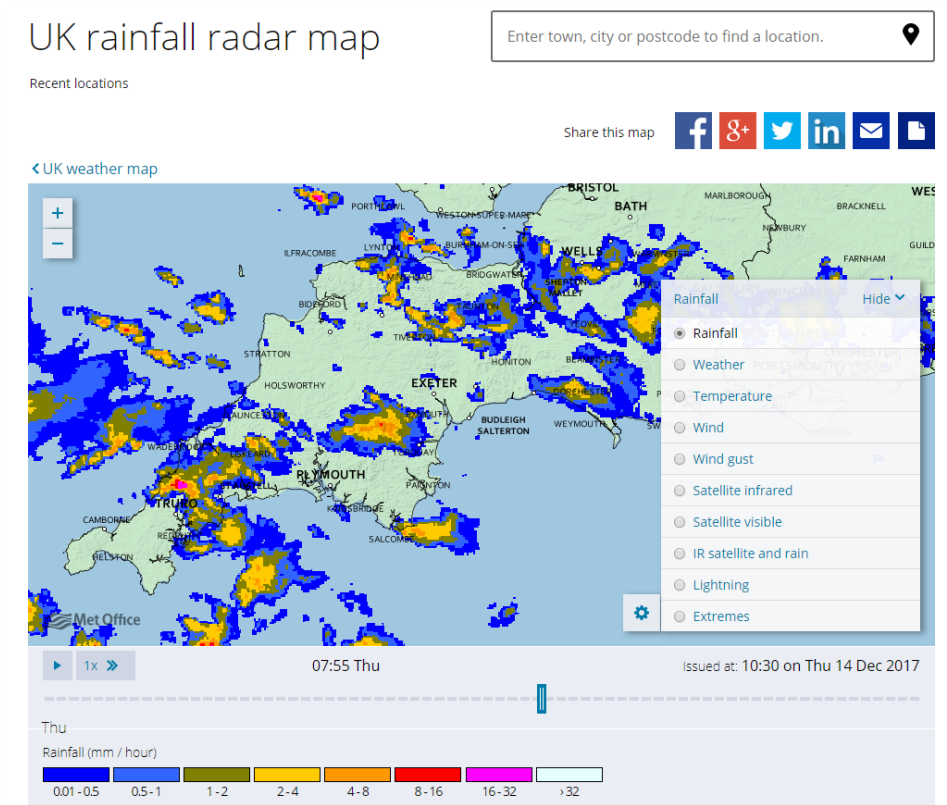
Map showing the Dart Start Bay and Torbay Operational Catchment. The map displays the catchment boundary in blue, major roads (A38, A379, A3121, A3122, A381), and towns including Exeter, Bovey Tracey, Paignton, and Dartmouth. A legend at the bottom identifies River, Lake, and surface water operational catchment.

© Crown copyright and database rights 2017
Ordnance Survey

What are the conditions like?

Met Office – Rainfall Radar

The survey form asks how much rain there has been in the 24 hours before the survey was completed. It doesn't ask for too much detail (the options are None, Light Rain or Heavy Rain), but if you've been away it can be helpful to check what the weather has been like. Also, keeping an eye on the weather can help you to find some interesting results – try doing a few surveys during dry weather and then comparing to conditions after heavy rain.



What are the conditions like?

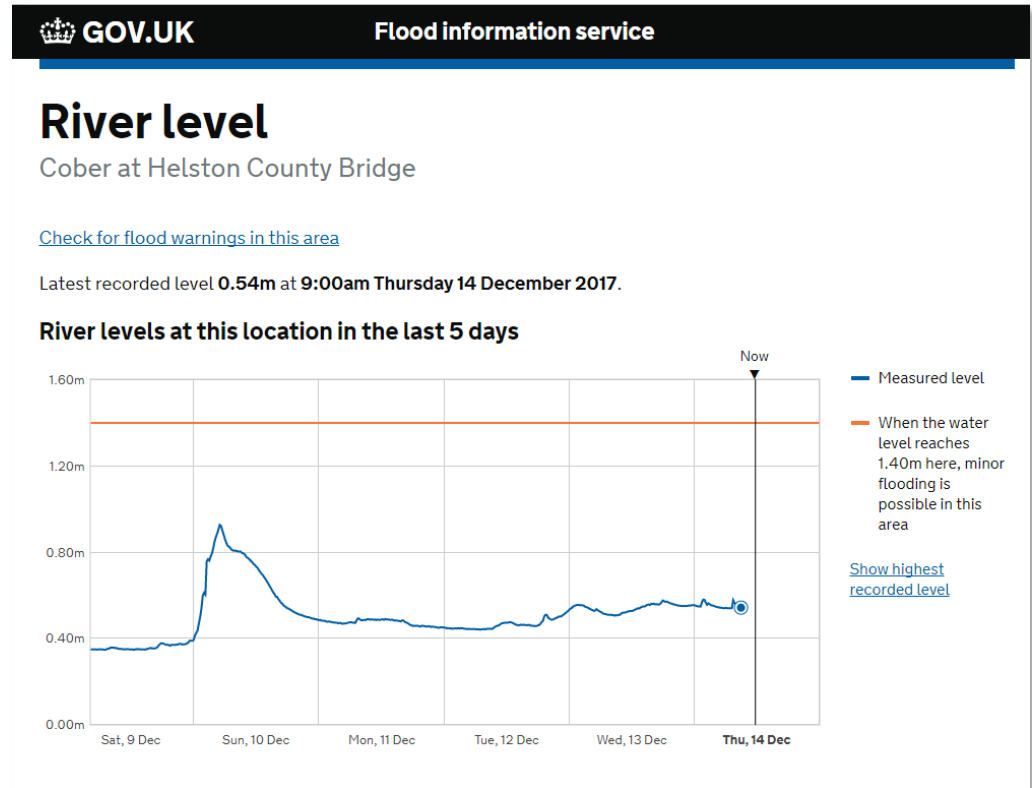
Environment Agency – River Levels

The survey form also asks about flow conditions and water level.

Some general tips for flow conditions are provided on the form;

- ‘Steady’ – walking speed
- ‘Surging’ – faster than walking speed
- ‘Slow’ – slower than walking speed

However, when you first get started or visit a site for the first time, water level can be difficult to judge. The EA River Level site is a useful resource for understanding recent river levels.



Get in touch

If you have any questions, or would like to know more, please email csi@wrt.org.uk

Thanks for being part of Westcountry CSI

