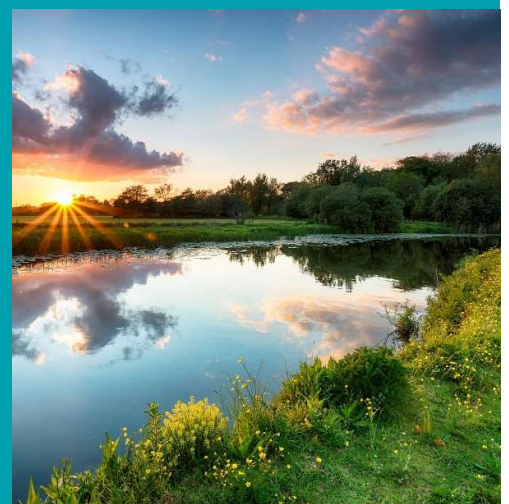
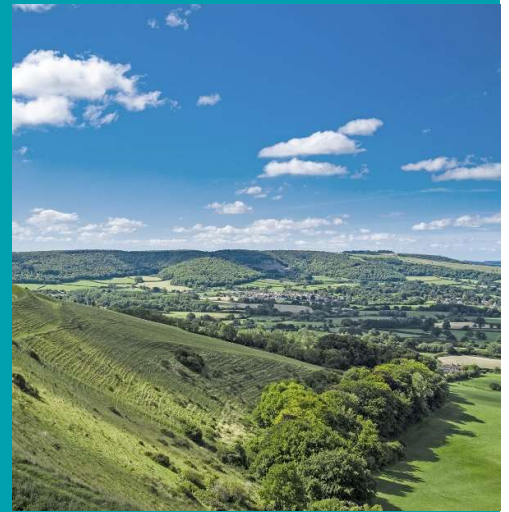


West Country Water Resources Group

## Environmental Destination

Annex A: Dorset Stour  
pilot catchment plan to increase  
future water supply and low  
flow environmental resilience



---

## Report for

Report for  
Paul Merchant – Supply Demand Manager  
FAO: West Country Water Resources Group  
South West Water  
Peninsula House  
Rydon Lane  
Exeter  
EX2 7HR

---

## Main contributors

Nancy Stone  
Liz Buchanan  
Rob Soley

---

## Issued by

.....  
Nancy Stone

---

## Approved by

.....  
Liz Buchanan

---

## Wood Group UK Limited

Shinfield Park  
Shinfield  
Reading RG2 9FW  
United Kingdom  
Tel +44 (0)118 913 1234

Doc Ref. 807434-WOOD-WRG-DS-RP-OW-0001\_S0\_P01.1

[https://woodplc.sharepoint.com/teams/environmentalambition-wood/shared documents/wood/trial catchments/deliver/reporting/draft/annex a stour.docx](https://woodplc.sharepoint.com/teams/environmentalambition-wood/shared%20documents/wood/trial%20catchments/deliver/reporting/draft/annex%20a%20stour.docx)

---

## Draft report disclaimer

This report has been prepared in a working draft form and has not been finalised or formally reviewed. As such it should be taken as an indication only of the material and conclusions that will form the final report. Any calculations or findings presented here may be changed or altered and should not be taken to reflect Wood's opinions or conclusions.

---

## Copyright and non-disclosure notice

The contents and layout of this report are subject to copyright owned by Wood (© Wood Group UK Limited 2021) save to the extent that copyright has been legally assigned by us to another party or is used by Wood under licence. To the extent that we own the copyright in this report, it may not be copied or used without our prior written agreement for any purpose other than the purpose indicated in this report. The methodology (if any) contained in this report is provided to you in confidence and must not be disclosed or copied to third parties without the prior written agreement of Wood. Disclosure of that information may constitute an actionable breach of confidence or may otherwise prejudice our commercial interests. Any third party who obtains access to this report by any means will, in any event, be subject to the Third Party Disclaimer set out below.

---

## Third party disclaimer

Any disclosure of this report to a third party is subject to this disclaimer. The report was prepared by Wood at the instruction of, and for use by, our client named on the front of the report. It does not in any way constitute advice to any third party who is able to access it by any means. Wood excludes to the fullest extent lawfully permitted all liability whatsoever for any loss or damage howsoever arising from reliance on the contents of this report. We do not however exclude our liability (if any) for personal injury or death resulting from our negligence, for fraud or any other matter in relation to which we cannot legally exclude liability.

---

## Management systems

This document has been produced by Wood Group UK Limited in full compliance with our management systems, which have been certified to ISO 9001, ISO 14001 and ISO 45001 by Lloyd's Register.

---

## Document revisions

No.	Details	Date
i1	Draft for review	January 2022

# Contents

---

<b>1.</b>	<b>Overview</b>	<b>5</b>
1.1	This pilot catchment plan	5
1.2	Contents of this annex	5
<b>2.</b>	<b>Catchment summary</b>	<b>6</b>
2.1	Why the Dorset Stour pilot?	6
2.2	The current state of the catchment	6
	Geography, geology, rivers and environmental designations	6
	Abstraction pressures	7
	Water resource availability	8
	Flood risks	9
	Water quality pressures	9
	Future population pressures	10
	Water Framework Directive (WFD) status	10
2.3	Existing water company water resource management planning (WRMP) options in the Dorset Stour	12
2.4	Environment Agency Catchment Strategy for the Dorset Stour	14
<b>3.</b>	<b>Environmental Ambition challenge</b>	<b>15</b>
3.1	Predicted 2050 flow deficits and surpluses	15
3.2	How do the Environment Agency's estimates of flow reductions due to climate change compare with updated UKCP18 for the Dorset Stour?	17
3.3	Licences highlighted by the Environment Agency for potential abstraction reductions (or other low flow support)	19
3.4	Potential 2050 supply loss compared to published WRMP options	21
<b>4.</b>	<b>Environmental Destination catchment plan to increase future water supply and low flow environmental resilience</b>	<b>23</b>
4.1	Current projects in the catchment	23
4.2	Future planned projects	24
4.3	CaBA opportunity mapping: a resource for future projects	25
4.4	WCWR Dorset Stour catchment action plan	26
<b>5.</b>	<b>References</b>	<b>30</b>
<b>6.</b>	<b>Figures</b>	<b>31</b>

---

Table 2.1	2019 (Cycle 2) EA Catchment Data for selected water bodies of particular water resources interest in the catchment <sup>4</sup>	11
Table 2.2	Preferred options in the 2019 WRMP, relevant to the Dorset Stour catchment (from Wessex Water, 2019 and South West Water Bournemouth Water, 2019)	12
Table 2.3	Supply-side options reviewed (but not preferred) in the development of the 2019 WRMP, relevant to the Dorset Stour catchment (from Wessex Water, 2019 and South West Water Bournemouth Water, 2019)	13
Table 2.4	Demand-side options reviewed (but not preferred) in the development of the 2019 WRMP across water company supply zones (from Wessex Water, 2019 and South West Water Bournemouth Water, 2019)	14
Table 3.1	Dorset Stour Predicted Fully Licensed 2050 Environmental Flow Surplus or Deficit (Water body outflow, Ml/d), for water bodies where potential PWS abstraction reductions are highlighted by the Environment Agency	17
Table 3.2	Details of PWS abstractions for which potential abstraction reductions have been flagged by the EA	19
Table 3.3	Dorset Stour catchment: context of potential 2050 supply losses	21
Table 4.1	Phased water resources resilience action plan to 2050 for the Dorset Stour (and lower River Avon)	28

---

Graphic 4.1	Stour Catchment Initiative projects	24
-------------	-------------------------------------	----

Figure A2.1	Dorset Stour catchment; Rivers and Geology
Figure A2.2	Dorset Stour catchment: Designated sites and Drinking Water Safeguard Zones
Figure A2.3	Dorset Stour catchment: PWS GW and SW Abstractions and Discharges
Figure A2.4	Dorset Stour catchment; Groundwater abstraction by sector (total, Ml/d)
Figure A2.5	Environment Agency water resource availability at Q30, Q50, Q70, Q95 for river water bodies
Figure A2.6	WFD water body overall status (i.e. chemical + ecological, Cycle 2, 2019)
Figure A2.7	WFD water body ecological status (Cycle 2, 2019)
Figure A2.8	Recent Actual environmental flow surpluses & deficits at Throop around the 1976 drought indicating the need for low flow support or seasonal storage
Figure A3.1	EA predicted fully licensed 2050 flow surpluses and flow deficits (Ml/d) for water bodies under Q95 low flow conditions (enhanced scenario)
Figure A3.2	Flow changes expected due to climate (Dorset Stour at Throop): Projections from UKCP18 climate & PDM gauge-calibrated river flow models
Figure A3.3	Flow changes expected due to climate (Dorset Stour at Throop): Projections from UKCP18 climate & G2G national natural river flow models
Figure A4.1	Dorset Stour catchment: CaBA opportunity mapping
Figure A4.2	Short term 2030 catchment measures: Dorset Stour
Figure A4.3	Medium term 2040 catchment measures: Dorset Stour
Figure A4.4	Long term 2050 catchment measures: Dorset Stour

---

# 1. Overview

This document is one of five technical annexes that lay out plans for holistic measures that may be implemented in five WCWR pilot catchments to increase water supply and environmental low flow resilience. These set out steps towards an Environmental Destination for 2050 in each catchment, in response to the water resources-related 'Environmental Ambition' challenge set by the Environment Agency as part of its National Framework for Water Resources (March 2020).

## 1.1 This pilot catchment plan

This pilot catchment plan sets out the measures best suited to achieve future water resources resilience and improvement in the **Dorset Stour Catchment**, in response to the challenge to meet environmental flow objectives, even as flows are expected to fall due to climate change

Full details of the project context, scope, data sources and stakeholder engagement are given in the main report.

## 1.2 Contents of this annex

After this introduction,

- **Section 2** provides a summary of the catchment and the pressures on it.
- **Section 3** details the EA-suggested Environmental Ambition abstraction reductions that may be needed to improve river flows. It also provides an indication of how the flow regime is projected to change as the climate shifts into the future.
- **Section 4** describes the current projects underway in the catchment and summarises the strategic action plan of water company measures that could be implemented in a phased approach to increase water supply resilience. Projects currently focused on land management, habitat creation, restoration, re-wilding and diffuse water quality improvements are also included because these should improve ecological resilience through droughts, even though they will not make much difference to the flow regime.
- References are given in **Section 5**.

Figures are provided as a slide pack at the back of this Annex in **Section 6 (filename '807434-WOOD-WRG-DS-FG-OW-0001\_S0\_P01.1.ppt')**.

## 2. Catchment summary

The largely rural Dorset Stour catchment is underlain by a mixture of Jurassic low permeability clays (upper catchment), the Chalk aquifer (middle catchment), and the London Clay (lower catchment) (**Figure A2.1**). The Chalk is strategically important both for public water supply and also for the aquatic ecology. It supports a number of tributary rivers and winterbourne streams. This section describes the catchment as it is now - the rivers that drain it, the interaction of surface water with groundwater, the pressures from abstraction as well as from diffuse and point sources of pollution.

### 2.1 Why the Dorset Stour pilot?

The WCWR scoring and consultation process for pilot catchment selection is presented in the main report.

For the **Dorset Stour catchment**, the Environment Agency's Environmental Ambition calculations suggest that there are reaches of the middle river where flows are likely to fall below environmental targets, and that these deficits will get worse as the climate changes. The catchment does not contain nationally or internationally prioritised SSSI riverine sites impacted by water abstraction – unlike the neighbouring European-designated Hampshire Avon Special Area of Conservation (SAC). But it is important to focus on the Stour partly because this will be affected by the desire to significantly reduce low flow summer abstraction from the more highly protected lower Avon.

*Increased* summer pumping from the Lower Stour will probably be needed to maintain supplies to Bournemouth whilst improving river flows in the Lower Avon. A long-term strategy has been outlined with phased measures to raise low flows in the Lower Stour in order to support more abstraction.

The catchment is also home to a number of active stakeholder groups and there is good public access along the lower reaches around Bournemouth and Christchurch - so measures to improve river flows, habitats and water quality are viewed as potentially benefiting the local economy.

### 2.2 The current state of the catchment

#### Geography, geology, rivers and environmental designations

The River Stour flows southeast through Wiltshire and Dorset, discharging to the English Channel, together with the River Avon, through Christchurch Harbour (**Figure A2.1**). Its catchment is predominantly rural and agricultural in nature, with areas of urban development concentrated in the southeast along the coast associated with Bournemouth, Southbourne and Christchurch, and Blandford Forum in the middle reaches (**Figure A2.2**).

The headwaters of the Stour arise from springs that issue from the Upper Greensand at Stourhead. As the river flows south, it is joined by the River Cale and the River Lydden. The upper catchment

here is predominantly underlain by impermeable clays and limestone belonging to a mixture of Jurassic geology, including the Oxford Clay, Corallian Limestone, Great Oolite Group and Kimmeridge Clay (**Figure A2.1**).

As the Stour flows across the Dorset Downs, it passes onto the Chalk outcrop at Blandford Forum. Chalk tributary rivers and winterbourne streams join the Middle Stour in this section, including the Tarrant, North Winterbourne and River Allen. Here the main channel also interacts with the chalk whilst retaining a flashier runoff and sediment-loaded character derived from the upper catchment. It supports diverse ecological assemblages including small numbers of salmon and sea trout, partly associated with accretion of clear, cool, good quality groundwater-dominated baseflow.

In the Lower Stour, the Chalk is overlain and confined by the Tertiary sands, gravels and clays of the Thames Group and Bracklesham Group and the river becomes disconnected from the Chalk aquifer at depth. It is joined by the Moors River (River Crane in its upper part) northwest of Christchurch, which drains the east part of the catchment, flowing southwards from its source at Cranborne on the edge of the Chalk outcrop.

The Middle and Lower Stour, and also the tributaries of the Moors River System, have been in some sections significantly modified by historical dredging and removal of gravel from the river bed, by channel re-alignment and widening, the installation of weir structures, impoundments, and by weed cutting and tree removal. Little semi-natural wetland vegetation remains in the floodplain and the extent of a diverse riparian buffer zone has been restricted due to the agricultural land uses and grazing that now surround the Stour (Environment Agency, 2019a). In the urban and suburban southern part of the catchment close to the coast, former wetland areas have been drained and measures to reduce flooding risks have also disconnected the main channel from the floodplain

Detailed river restoration plans for the Middle and Lower Stour, and for the Moors River System have been published by the Environment Agency in 2019 (discussed further in **Section 4**).

Designated sites in the catchment include Special Areas of Conservation (SAC), Special Sites of Scientific Interest (SSSI) and Ramsar sites (**Figure A2.2**), although these do not include the riparian habitats of the Stour itself. Of particular note are the Dorset Heaths SAC in the southern catchment, designated for its dry and wet heath habitats, and peat bog pools (JNCC<sup>1</sup>). The Moors River System is designated a riverine SSSI for its exceptional chalk stream diversity of aquatic and wetland plants, and species of conservation importance (Natural England, 1999), but is not under any significant pressure from water abstraction.

### Abstraction pressures

There is an extensive history of abstraction development and impact investigation in this catchment.

Groundwater abstraction is dominantly from the Chalk, the majority of which is licensed to Wessex Water with the largest sources located near the Middle Stour at Black Lane, Sturminster Marshall and Corfe Mullen (**Figures A2.3** and **A2.4**). In addition, there is a large Bournemouth Water (i.e. South West Water) intake from the lower reaches of river at Longham used to supply the city together with surface water intakes on the neighbouring River Avon at Matchams and Knapp Mill.

---

<sup>1</sup> <https://sac.jncc.gov.uk/site/UK0019857>

Bournemouth Water also operate the Stanbridge Mill groundwater source and river support schemes on the River Allen, together with an unused licence at Wimborne. The River Allen tributary has been the focus of measures to improve low flow resilience for more than 40 years. This has reduced pumping from Stanbridge with associated abstraction relocation downstream to Longham. Three groundwater to river support schemes have also been developed (at Wyke Down, Gussage and Crichel) which are operated during most summers to maintain low flows.

Groundwater abstraction intercepts flow in the aquifer that would otherwise contribute to river baseflow and therefore directly affects surface water flows, particularly in the Middle Stour. Lowered groundwater levels can also affect springs and winterbourne tributaries - extending dry periods, particularly under drought conditions. Wessex Water have previously investigated the environmental impact of abstraction on headwater river flows in Shreen Water and Ashfield Water at Mere, and on the River Tarrant<sup>2</sup>, Pimperne and Iwerne tributaries

The Wessex Basin regional groundwater and river flow model has been built by the Environment Agency and Wessex Water covering the Stour, Avon and Poole Harbour catchments. This has been extensively used by both water companies and the regulator to inform abstraction licence decision making for over 10 years.

The latest 2020 Dorset abstraction licensing strategy assesses groundwater availability across the catchment as 'Restricted water available' noting that there is very little scope for any additional consumptive abstraction in low flow summer months (Environment Agency, 2020a).

Drinking water safeguard zones have been designated associated with Wessex Water's Black Lane, Shapwick and Sturminster Marshall public water supply sources in the Middle Stour, all associated with nitrate pressures (**Figure A2.2**). These have been delineated using the Wessex Basin groundwater model which has also helped focus Catchment Sensitive Farming efforts to reduce diffuse pollution inputs of nutrients into the aquifer in order to protect public supply source water quality and ameliorate environmental eutrophication risks.

## Water resource availability

Environment Agency published maps of river water body water resource availability at a range of historical climate flow conditions are shown in **Figure A2.5** (Environment Agency 2021<sup>3</sup>).

At high flows above Q30 (i.e. the flow exceeded for 30% of the time), water is assessed as being available across the entire catchment (that is, when flows are high, there is more water than is required to meet nationally consistent environmental river flow objectives).

At moderate (Q50) and low flows (Q70 and Q95) this picture changes, with flows falling below the Environmental Flow Indicator (EFI) in the upper River Allen and also in the Stour headwaters, such that no water is available at any time for licensing. In the remainder of the middle and lower catchment, flows fall below the Environmental Flow Indicators (EFI) for around 30% of the time (i.e. below Q70 conditions) such that restricted water would be available for licensing – subject to low flow constraints.

---

<sup>2</sup> <https://www.wessexwater.co.uk/environment/protecting-and-enhancing-the-environment/investigations>

<sup>3</sup> <https://environment.data.gov.uk/DefraDataDownload/?mapService=EA/WaterResourceAvailabilityAndAbstractionReliabilityCycle2&Mode=spatial>



It is also important to note that although the Lower Stour water body is mapped green on **Figure A2.5** – i.e. as having more water available for licencing - there is a local lower flow reach within it at the Throop gauging station. This is just downstream of the Longham abstraction intake and upstream of discharges from wastewater treatment works which return water from Bournemouth to the river before it flows into Christchurch Harbour.

## Flood risks

The Stour catchment has a history of flood risk, from surface water flooding, groundwater flooding and tidal flooding. The sources of flood risk vary across the catchment but are mostly associated with the areally extensive lower permeability upper catchment which generates flashy peaky surface runoff affecting the whole of the main river channel downstream. A smoother hydrological response is characteristic of the middle catchment due to the buffering of Chalk groundwater storage between recharge and river baseflow. However, prolonged groundwater flooding is an issue in some places following heavy rainfall during times of high antecedent groundwater levels. Where the lower river flows onto clays, sands, and gravels, a more mixed response is typical and the river channel has been locally modified to reduce urban flooding risks through Bournemouth. Tidal flooding up to Ilford has been documented (Environment Agency, 2012).

## Water quality pressures

Wessex Water operates the waste water treatment works which return mains water to the rivers across the catchment. There are treatment works for many small villages and towns (e.g. Wincanton, Shaftesbury, Blandford, Wimborne, Corfe Mullen), with the largest discharges returned from Bournemouth to the bottom reaches of the river. These discharges are consented and regulated by the Environment Agency. Considerable improvements in discharge water quality have been achieved over the past 30 years and investment is ongoing as clean-up standards continue to be tightened. As the sewer systems often combine household effluent with urban drainage runoff, occasional storm overflow of untreated water remains a focus for improvement.

Intensive agricultural land use in the catchment also results in diffuse pollution due to the application of nutrient fertilizers (phosphates and nitrates) and herbicides, sometimes associated with bare soil loss and sediment runoff into water courses. This is particularly an issue in the less permeable, flashier runoff upper Stour, which has been designated a priority catchment under DEFRA's Catchment Sensitive Farming Programme. Phosphorous from both wastewater treatment works and diffuse agricultural sources contributes to eutrophication of river sources with the risks of algal blooms and low dissolved oxygen increasing during dry summers when temperatures are high and flows are low.

Nitrate concentrations are also rising in the Chalk which increase treatment and blending costs for public supplies and cause particular ecological problems in the transitional waters of Christchurch Harbour.

Urban pollution risks in the areas around Bournemouth also affect the river water quality in the Lower Stour.

## Future population pressures

In the Stour catchment, future population growth is forecast particularly in the urban and suburban areas, including the areas around Bournemouth, Blandford, Sturminster and Gillingham. BCP and Dorset Council are planning for a 20% increase in population in Stour by 2035 (Keith Calder, *pers comm*, 2021).

## Water Framework Directive (WFD) status

A map of the overall WFD (Cycle 2, 2019) status of water bodies across the catchment is shown on **Figure A2.6**. This combines both the chemical and ecological status reported by the Environment Agency for the water bodies. The recent recognition of new types of pervasive pollutants which affect many rivers across the country is tending to dominate overall WFD status. So when focusing on water resources, abstractions and river flows it is more helpful to consider ecological status.

River flow and morphological condition (i.e. the naturalness of channel profiles, the existence of weirs and barriers etc.) are considered as supporting elements in the assessment of ecological status - which is primarily based on monitoring the health, diversity and abundance of plants, bugs and fish in rivers, lakes and estuaries. The WFD water body ecological status of Dorset Stour water bodies (Cycle 2, 2019) is mapped on **Figure A2.7**.

There are several key reasons for the failure to achieve good status mapped in both Figures A2.6 and A2.7 which have nothing to do with abstraction pressures:

- In the upper Stour, Cale, Lydden and Lodden the main WFD issue is with Phosphorus related to diffuse agricultural runoff.
- In the middle Stour WFD a key issue is the impact of physical modifications of the main channel including barriers on fish migration, ecological habitat and connection with floodplain habitats.
- Rising nitrate pollution of groundwater associated with land management practices is an issue across the chalk.
- In the lower Stour contaminated urban runoff and physical modifications of the channel also affect fish and other aquatic life.

Environment Agency catchment data<sup>4</sup> are summarised in **Table 2.1** for selected water bodies of particular interest to this plan which is focused on future water resource resilience. In these water bodies the Environment Agency's Environmental Ambition modelling has predicted river flows could fall below regulatory thresholds by 2050 unless the impacts of public water supply abstraction are reduced. These calculations incorporate projections of future changes in river flows expected due to climate change, plus the potential impacts of fully licensed abstraction, as discussed further in **Section 3**). These focus water body locations are labelled on **Figures A2.6** and **A2.7**.

---

<sup>4</sup> <https://environment.data.gov.uk/catchment-planning/OperationalCatchment/3140> accessed 09/11/21

Table 2.1 2019 (Cycle 2) EA Catchment Data for selected water bodies of particular water resources interest in the catchment<sup>4</sup>

Water body	Ecological status	Biological quality	Physico-chemical quality	Hydrological Regime	Chemical substances	RNAG
<b>1 Stour (Headwaters)</b> <b>GB108043022490</b>	Poor ecological status	Poor	Moderate (Phosphate poor)	Does not support good	Fail (Mercury & PBDE)	Point/diffuse sources (Phosphate, Macrophytes and Phytobenthos Combined)
<b>2 Shreen Water (including Ashfield Water)</b> <b>GB108043022450</b>	Poor ecological status	Poor	Moderate (Phosphate poor)	Does not support good	Fail (Mercury & PBDE)	Flow (Hydrological Regime – suspected due to GW abstraction); Point/diffuse sources (Phosphate, Macrophytes and Phytobenthos Combined, Fish)
<b>3 Allen (Headwaters)</b> <b>GB108043015790</b>	Good ecological status	Good	High	Supports good	Fail (Mercury & PBDE)	Flow (Hydrological Regime - suspected due to GW abstraction)
<b>4 Allen (Lower)</b> <b>GB108043011090</b>	Good ecological status	High	Good	Supports good	Fail (Mercury & PBDE)	NA
<b>5 Stour (Middle d/s Pimperne Brook)</b> <b>GB108043016052</b>	Poor ecological status	Poor	Moderate (Phosphate poor)	Supports good	Fail (Mercury & PBDE)	Point/diffuse sources (Phosphate, Macrophytes and Phytobenthos)

RNAG Reasons for not achieving good, PBDE Polybrominated diphenyl ethers

In addition to these water bodies which are a concern based on current public water supply abstraction licences, there is a potential need to re-locate around 70MI/d of summer abstraction from Matchams and Knapp Mill to Longham in order to raise Avon low flows into Christchurch Harbour. The SSSI and SAC designations of the River Avon are associated with 'close to natural functioning objectives' which are driving the need to reduce abstraction pressures on the bottom reach of the river. This means that the lower Stour also becomes a key focus in this plan for future water resources support to allow increased pumping from Longham.

Existing environmental flow deficits at Throop are relatively small and short lived, in comparison with higher flow surpluses (**Figure A2.8**). This means that there is already a need for more low flow support during dry summers which will grow and become more frequent in order to reduce pressures on the lower Avon. It also indicates the potential benefits of options which develop storage to store winter water for summer supply. A phased plan is summarised in **Section 4** including smarter conjunctive use to draw on groundwater storage in the River Allen, the potential

development of an Aquifer Storage and Recovery scheme at Longham, the relocation of Poole WWTW discharge to the Stour, and exploration of options for new surface reservoir storage in the upper catchment.

### 2.3 Existing water company water resource management planning (WRMP) options in the Dorset Stour

Wessex Water's previously published strategy centres on demand management, as presented in the Water Resource Management Plan (Wessex Water, 2019). This includes the management of leakage (15% reduction in 5 years), enhancing metering and providing water efficiency services.

South West Water (i.e. Bournemouth Water) also has a particular focus on the management of leakage (15% reduction in 5 years) (South West Water Bournemouth Water, 2019).

Preferred options for both companies are detailed in **Table 2.2**.

Table 2.2 Preferred options in the 2019 WRMP, relevant to the Dorset Stour catchment (from Wessex Water, 2019 and South West Water Bournemouth Water, 2019)

Option	Code	Type of option	Preferred (Y/N)	Earliest potential start date	WAFU MI/d	Detail
<b>Wessex Water</b>						
<b>Final Planning Scenario - 15% leakage reduction by 2025</b>	ALY	Other leakage control	Y	2020-21	18.6	Infrastructure renewal, active leakage control, pressure management, improved data analysis, and DMA improvements
<b>Met uplift optional</b>	M1a	Metering optants	Y	2020-21	0.4	Enhanced metering
<b>Home Check</b>	WE1	Household water audit	Y	2020-21	3.7	Home advice and device fitting visits
<b>Dashboard</b>	WE2	Customer education / awareness	Y	2020-21	1.3	Customer engagement dashboard
<b>South West Water – Bournemouth Water Resource Zone</b>						
<b>Innovation Bournemouth WRZ</b>	LB1-LB4	Schemes supporting Active Leakage Control - reduction in leakage by 15% by 2025	Y		4.4	A raft of measures including selective use of pressure management in key areas of the distribution network

WAFU – water available for use

A number of feasible supply-side options have also been explored by the water companies for this catchment, including the construction of desalination plants, bringing back mothballed sources into supply and exploring innovative licence changes. None of these have been taken forward as preferred options at this stage, as detailed in **Table 2.3**.

**Table 2.3** Supply-side options reviewed (but not preferred) in the development of the 2019 WRMP, relevant to the Dorset Stour catchment (from Wessex Water, 2019 and South West Water Bournemouth Water, 2019)

Option	Code	Type of option	Preferred (Y/N)	Earliest potential start date	WAFU MI/d	Detail
<b>Wessex Water</b>						
<b>Desalination (30 MI/d)</b>	R1a	Desalination	N	2025-26	30	A large desalination development on the south coast with the water transferred across the Wessex Water supply system
<b>Desalination (10 MI/d)</b>	R1b	Desalination	N	2025-26	10	Small desalination development on the south coast with water used locally
<b>Mothballed sources refurbished and brought back into supply - South</b>	R5a	GW enhancement	N	2022-23	2.6	Treatment processes upgraded enabling groundwater and spring sources in the south to be brought back into use that have been mothballed.
<b>South West Water – Bournemouth Water Resource Zone</b>						
<b>Re-introduce Wimborne</b>	BW1	Production management	N	2024	4.1	Re-introduce a currently unused (but licensed) source near Wimborne
<b>Potential increases in WAFU e.g. innovative licence changes</b>	BW2	Resource Scheme	N	2027	10	Exploring options to make the current weekly licence constraint more flexible

WAFU – water available for use

Feasible demand-side options have also been explored by the water companies for this catchment, including options to reduce leakage and options to reduce demand for water. None of these have been taken forward as preferred options at this stage, as detailed in **Table 2.4**.

Table 2.4 Demand-side options reviewed (but not preferred) in the development of the 2019 WRMP across water company supply zones (from Wessex Water, 2019 and South West Water Bournemouth Water, 2019)

Option	Code	Type of option	Preferred (Y/N)	Earliest potential start date	WAFU MI/d	Detail
<b>Wessex Water</b>						
<b>Options to reduce distribution losses (leakage)</b>	-	10 further options to manage and control leakage	N	2020-21	32.5	Active leakage management, mains replacement (not trunk mains), pressure management etc
<b>Options to reduce the demand for water</b>	-	3 metering options	N	2020-21	19.8	Reduction in demand through improved metering
<b>South West Water</b>						
<b>Options to reduce the demand for water</b>	-	22 options identified	N	2020-21	24.3	Metering, leaky loos fix, incentives, WWTW final effluent re-use

It is important to note that leakage from the public water supply system represents a return of water to the catchment. This is often associated with household connections rather than large leakage events from main supply pipes which are readily identified and quickly fixed. Where housing density is high such as in Bournemouth, rates of leakage are accounted for in the Wessex Basin groundwater and river flow model because much of the water is expected to end up in either the lower Stour or Avon. It follows that reductions in leakage, whilst reducing the rates of abstraction required for supply, may make less difference to river flows downstream of urban areas.

## 2.4 Environment Agency Catchment Strategy for the Dorset Stour

The Environment Agency's Keith Calder<sup>5</sup> is drafting a holistic Catchment Strategy for the Dorset Stour in parallel with this 'Environmental Destination' plan. Much of the summary of the catchment and broader environmental initiatives underway has been drawn from the developing Strategy, but this plan also provides a more water resources focused overview of the phased measures which may be needed to improve supply and river low flow resilience in the Stour whilst also enabling reductions in summer abstraction from the lower Hampshire Avon.

<sup>5</sup> Dorset Stour Catchment Strategy: under development and consultation by Keith Calder

## 3. Environmental Ambition challenge

This section summarises the predicted 2050 flow deficits and surpluses in the catchment and the potential future reductions in public water supply abstraction impacts highlighted by the Environment Agency's Environmental Ambition screening modelling, as set out in the National Framework for Water Resources (March 2020).

The Environment Agency's modelling indicates the additional water that may be needed by 2050 to meet:

- environmental river flow targets based on existing (Business as Usual, BAU) or enhanced (ENH) thresholds; and
- predicted future predicted (FP) demands for public water supply and other water uses, and also worst-case, fully licensed (FL) demand assumptions
- in the context of natural Q95 low flow conditions which have been simply factored down from current estimates for 2050 based on a climate change projection.

The Environment Agency provided the WCWRG with WFD river water body scale National Framework estimates of 2050 environmental flow surpluses or deficits to highlight the water bodies of concern (as summarised in Section 2 and presented in more detail below). An indication of the individual abstraction reductions which might be needed to meet the 2050 existing or enhanced environmental flows was also tabulated for the regional water resources groups and water companies to consider.

Whilst the main theme of the Environmental Ambition challenge is therefore framed in terms of 'potential abstraction reductions needed to meet river flow targets' and improve environmental low flow resilience, this implies that alternative sources of water will need to be found from elsewhere to maintain public supply resilience. At the same time, water companies must demonstrate that their demand suppression and supply systems are robust enough for a 1 in 500 year drought event. So smarter management options for the Dorset Stour which allow existing drought-resilient abstractions to continue (such as the chalk groundwater sources in the middle catchment) and also provide support to increase pumping at Longham, must also be on the table.

**Section 3.1** presents mapped and tabulated summaries of the water bodies with Environment Agency projected flow deficits. The climate change assumptions made in these projections are reviewed based on the latest suite of UKCP18 modelling data in **Section 3.2** which suggests that significant low and median flow reductions should be expected throughout the century. The potential licence reductions being scrutinised according to the Agency's analysis are listed in **Section 3.3**, and compared with published water company WRMP options in **Section 3.4**.

### 3.1 Predicted 2050 flow deficits and surpluses

Environmental Flow Indicator (EFI) targets are defined by the Environment Agency to indicate the river flow required to support Good Ecological Status under the EU Water Framework Directive

(WFD). The EFI allows a percentage deviation from natural flows at a specific location, defined based on the Abstraction Sensitivity Band (ASB) of the site.

The predicted fully licensed 2050 flow surpluses and flow deficits for Stour catchment water bodies under Q95 low flow conditions are mapped in **Figure A3.1**, under the EA's **enhanced** 2050 scenario, which is 'worst case' for planning purposes

In the enhanced scenario, increased environmental protection (i.e. a more stringent flow target) is assigned to protected areas, principal salmon and chalk rivers, and catchments with SSSI rivers and wetlands.

- For the Dorset Stour catchment, a significant portion of the middle and lower Stour and its tributaries including the River Allen have been assumed to be chalk streams so the EFI high sensitivity **ASB3** threshold has been applied. The local flow assessment point at the Throop gauging station where combined abstraction risks are highest is already ASB3 under Business as Usual assumptions (see Figure A2.8), so the enhanced standards make no difference to the deficits predicted at that point.
- In addition, the River Crane/Moors River catchment, which contains the Dorset Heaths SAC, has been designated as a more sensitive Common Standards Monitoring Guidelines (**CSMG**) catchment ('river' **ASB4**). However, this does not contain public water supply abstraction or other significant abstraction pressures so is not considered further in this plan.

It can be seen from **Figure A3.1** that for the majority of the water bodies within the Stour catchment, flow surpluses or flows close to the enhanced environmental flow target are predicted (mapped in green with Q95 flow surpluses labelled in MI/d).

However, 2050 Q95 flow deficits are predicted by the Environment Agency modelling for five water bodies, relating to both non-PWS and PWS abstraction:

- Stour (Headwaters)
- Shreen Water (including Ashfield Water) (near the **Mere** PWS abstraction)
- Allen (Headwaters) (near the **Stanbridge Mill** PWS abstraction)
- Allen (Lower) (also downstream of **Stanbridge** but including the potential risks associated with the unused **Wimborne** licence)
- Stour (Middle d/s Pimperne Brook) (associated with the **Corfe Mullen, Shapwick** and **Sturminster** PWS abstractions).

Further detail regarding those water body flow deficits linked to PWS abstraction is given in **Table 3.1** below and a summary of their current ecological status catchment data has been presented in **Table 2.1**.

This provides the surpluses and deficits at different flow percentiles, and also compares with the same outputs for the less stringent '**Business as Usual**' (BAU) scenario - where the regulatory approach remains the same, such that EFI ASB2 would apply for some chalk water bodies (e.g. allowing impacts up to 15% of QN95 rather than the 10% allowed for ASB3).



Table 3.1 Dorset Stour Predicted Fully Licensed 2050 Environmental Flow Surplus or Deficit (Water body outflow, MI/d), for water bodies where potential PWS abstraction reductions are highlighted by the Environment Agency

Flow condition	Shreen Water (including Ashfield Water) GB108043022450		Stour (Middle d/s Pimperne Brook) GB108043016052		Allen (Headwaters) GB108043015790	
	BAU (MI/d)	ENH (MI/d)	BAU (MI/d)	ENH (MI/d)	BAU (MI/d)	ENH (MI/d)
Q30	2.49	1.64	214.15	193.71	10.85	10.85
Q50	-4.31	-4.96	62.06	43.40	-2.64	-2.64
Q70	-5.93	-6.41	3.47	-9.28	-2.50	-2.50
Q95	-6.12	-6.48	-22.09	-29.83	-1.64	-1.64

\*BAU - Business as Usual; ENH – Enhanced Scenario

Waterbody Surplus or Deficit numbers are MI/d based on EA natural flow, abstraction and environmental flow target assumptions for 2050

**Figure A3.1** also maps the largest Fully Licensed 2050 Q95 environmental flow deficit for the lower Avon river water body (in red). It is important to note that the water body sub-catchments are coloured according to the deficits estimated at their outflow points. So the lower Avon deficit actually only affects just over 1km at the bottom of the river downstream of Knapp Mill before it flows into Christchurch Harbour. Actual summer abstraction from Knapp Mill is currently around 70 MI/d and the SSSI and SAC designation flow objective for the Avon require this to be moved elsewhere under lower flow conditions. **Section 4** sets out a phased short, medium and long term plan for enhancing flow support to the Longham source on the lower Stour which should result in flow improvements for the middle Stour and the Allen, as well as delivering objectives for the Avon, and maintaining public supply resilience. Hence the local low flow reach downstream of Longham at Throop is noted on **Figure A3.1** as another focus for the plan.

### 3.2 How do the Environment Agency's estimates of flow reductions due to climate change compare with updated UKCP18 for the Dorset Stour?

The Environment Agency's National Framework predictions of natural flows for 2050 were based on one of the eleven UKCP09 Future Flows projections known as 'afixK', as available at the time. This projected relatively more marked falls in flow over time compared with the remaining 10 'equally likely' suite of UKCP09 models. At the end of 2021, CEH and a consortium of associates working with the Meteorological Office have delivered the UKCP18 successor to the Future Flows data which includes 12 'equally likely' projections of river flows and groundwater levels from 1982 to 2080 using a variety of alternative modelling approaches. These Enhanced future Flows and

Groundwater (eFlaG) data will soon be available online<sup>6</sup> but an early release has been used to compare against the Environment Agency's assumptions for the Dorset Stour and provide stakeholders with a clear picture of how flows are expected to change to 2050 and beyond.

**Figures A3.2 and A3.3** plot rolling 18 year flow percentile statistics in MI/d derived from modelled daily flow projections for Throop on the lower Stour. Plots are included to show how high (Q1 'floods'), median (Q50), low (Q95) and very low (Q99 'droughts') flows are predicted to change through the 21<sup>st</sup> century. There are lines for each of the 12 'equally likely' UKCP18 regional climate models (RCM) provided from eFlaG compared with the projection for the same location from UKCP09 Future Flows, as included in the Environment Agency's calculations.

On the right of each percentile time series, an area plots indicates how many of the 12 UKCP218 eFlaG models show increases or decreases in flow, how big that projected change is relative to the start of the century (2000), and how the differences evolve past 2050 and on to 2080.

These plots indicate that highest flood event flows (Q1 and above) are expected to be steady or perhaps increase with time according to most of the projection models. These increases are modest – perhaps over 10% by 2050, but this still represents a very large increase in highest flood flows. It indicates that flooding risks in the Stour are expected to get worse, but also emphasises the value of surface or groundwater storage options designed to capture high flows to support drier period supplies.

**Figure A3.2** flow predictions are based on the most reliable of the eFlaG gauge-calibrated models (the Probability Density Model PDM) and indicate how flows calibrated against the historical gauged record (i.e. including the influence of upstream abstractions and discharges) may change due to climate shifts in rainfall and potential evaporation. Projected falls in median (Q50), low (Q95) and very low (Q99) flows are similar to or greater than the UKCP09 afixK dashed black line. i.e. the Future Flows scenario which was considered worst case now appears reasonable or perhaps optimistic. By 2050, most of the eFlaG models are predicting more than 10% reductions in median flows, with falls of 20 or even 30% predicted by several models under drier conditions.

The **Figure A3.3** plots are based on the natural flow projections of the national 'Grid to Grid' model using the same RCM climate inputs, but no gauged record calibration. Although less well adapted to the gauged local flow responses and probably less reliable, these projections are included for comparative purposes because they ignore any abstraction or discharge influences on the gauged record, Highest flood flow projected changes are similar, but median and lower flow falls are much steeper.

In order to more confidently understand future flow shifts in all the water bodies across the Dorset Stour it is recommended that the UKCP18 climate projections are run through the Wessex Basin groundwater and river flow model – to distinguish the different hydrological responses in the upper, middle and lower urbanised catchments. However, **Figures A3.2 and A3.3** confirm that low flows are expected to fall significantly to 2050. Even though the Environment Agency will therefore need to allow EFl regulatory flow thresholds to evolve downwards with time, the proportion allowed for abstraction will be squeezed.

This forward look adds real urgency to the need to consider options which will boost storage and low flows support on the supply side, beyond the current demand-side and leakage focus of WRMP options. It also highlights the need for riverine and wetland habitat restoration and active

---

<sup>6</sup> <https://eidc.ac.uk/>

management to enhance ecological resilience to dry periods which are becoming and will continue to become more frequent and longer. Broader re-wilding, soil and environmentally sensitive farm land management initiatives are also vital to improve water quality but they will not change the projected decline in low flows. As the climate warms, the higher temperatures will result in more evapotranspiration and less water in our rivers regardless of any 'nature-based solutions' implemented upstream.

### 3.3 Licences highlighted by the Environment Agency for potential abstraction reductions (or other low flow support)

If it is required to fully address the flow deficits identified in the Environment Agency's 2050 Environmental Ambition projections, licence reductions may be required for four Wessex Water groundwater licences and one South West Water groundwater licence. Alternatively, other options to support low flows can be considered – which may also enable abstraction at Longham to increase in order to deliver low flow recovery at the bottom of the Avon.

Licence details for these abstractions which are 'at risk' are given in **Table 3.2**. South West Water's unused Wimborne licence could be added to this table but is likely to be transferred down to Longham at the conclusion of an ongoing deterioration risk investigation.

Table 3.2 Details of PWS abstractions for which potential abstraction reductions have been flagged by the EA

Abstraction Information	Mere Boreholes	Shapwick Boreholes	Sturminster Marshall	Corfe Mullen	Stanbridge Mill
<b>Licence Number</b>	13/43/000/G/001	13/43/034/G/216	13/43/034/G/229	13/43/034/G/149	13/43/035/G/109
<b>Water company</b>	Wessex Water	Wessex Water	Wessex Water	Wessex Water	South West Water
<b>Fully Licensed</b>	9.09	8	15.95	22.79	12.5
<b>Recent Actual</b>	6.44	4.98	15.23	16.58	10.4
<b>Surface water/ Groundwater</b>	Groundwater	Groundwater	Groundwater	Groundwater	Groundwater
<b>WFD Waterbody</b>	GB108043022450	GB108043016052	GB108043016052	GB108043016052	GB108043015790
<b>Investigations</b>	AMP4 (2006-2010) Impact of abstraction not significant – no licence change required	AMP4: Impact of abstraction not significant – no licence change required, AMP6: Investigation ongoing: monitoring of flows and ecology to understand impact. Potential reduction in licence at Stubhampton of 0.5-1 MI/d			None
<b>Notes</b>	3 points 100% impact in waterbody	2 points 100% impact in waterbody	3 boreholes & 1 well (1 WRGIS point)	10 points 100% impact in waterbody	3 points 100% impact in waterbody

Abstraction Information	Mere Boreholes	Shapwick Boreholes	Sturminster Marshall	Corfe Mullen	Stanbridge Mill
			98% impact in waterbody		

These sources are all located close to headwater springs or the main river such that their impacts on river flows are fairly direct – there is little development of groundwater storage which might redistribute impacts to winter higher flow periods or spread drawdown impacts more widely if they were located further from the river. If the water body deficits were to be completely recovered (by sharing losses across all these abstractions), the reductions could be as follows:

- **Mere abstraction (Stour headwaters): 60% reduction in licence.** This would address the projected flow deficit in the Shreen Water which is present until flows above the Q50 (see **Table 3.1**). There is a small surplus at high flows so if a storage solution were possible (e.g. a small reservoir in the less permeable catchment just downstream) then summer compensation releases could offset this reduction.
- **Shapwick, Sturminster Marshall and Corfe Mullen abstractions (middle-lower Stour): 60% reduction OR 60% FL quantity as stream support at low flows.** This deficit is only present at low flows but the deficit is too large to fix using a groundwater – river augmentation scheme which would not be effective for the main channel. If wholesale reduction in abstraction from these reliable drought sources is to be avoided, another source of low flow support will be required. This could be either the relocation of the Poole WWTW discharge (if this can be feasibly sited at or upstream of Corfe Mullen), and/or summer flow support from new headwater reservoirs developed in the longer term – both options intended to allow Longham to be pumped harder. It is noted that all three of these sources have ongoing AMP6 investigations and so an appropriate solution may be suggested by that programme.
- **Stanbridge Mill abstractions (River Allen): 20% reduction in licence.** This reduction would address the flow deficit in the River Allen (see **Table 3.1**). However, smarter conjunctive switching of low flow abstraction down to Longham and then back up to Stanbridge which flows are higher, operated in association with the existing groundwater support schemes, and the downstream relocation of the Wimborne licence could also deliver low flow improvements whilst allowing total abstraction rates to be maintained.

The total groundwater licence reductions across the catchment flagged by the Environment Agency therefore potentially amount to:

- **Wessex Water -33.5 MI/d**
- **South West Water -2.5 MI/d**

In addition, South West Water would need to find alternative sources to replace the loss of around 70 MI/d summer abstraction from the lower Avon – hence the additional focus on Longham and the lower Stour.

### 3.4 Potential 2050 supply loss compared to published WRMP options

Options explored in the water company WRMPs include demand reductions and leakage savings to reduce the future supply required (see **Section 2.3**). In this catchment, no options are currently being taken forward to boost supply.

**Table 3.3** puts into context the scale and magnitude of the potential 2050 abstraction reductions against the current licensed and recent actual abstraction from the catchment, and WRMP options.

If the EA's 2050 abstraction reductions were implemented, then, even taking into account the WRMP 2045 demand reductions and leakage savings, this would represent:

- **62% of Wessex Water's abstraction from the Dorset Stour catchment (30.6 M/d)**
- **21% of South West Water's abstraction from the Dorset Stour catchment (1.9 MI/d) (not including the loss of Knapp Mill on the Avon ~ 70 MI/d for ~half the time).**

It is clear that these are huge Environmental Ambition challenges which demand measures well beyond the options published in existing WRMPs. Potential solutions will be associated with large financial and carbon costs and will take around 25 years to complete. The Environmental Destination plan needs to be phased so that incremental benefits can be realised along the way – as set out in **Section 4**.

**Table 3.3** Dorset Stour catchment: context of potential 2050 supply losses

	Wessex Water	South West Water*	Unit
Annual PWS licensed abstraction (catchment total)	64.1	18.4	MI/d
Annual PWS RA abstraction (catchment total)	49.4	9.3	MI/d
WRMP baseline water company total water into supply (WAFU) Base Year 2017/18	408.9	709.4	MI/d
WRMP baseline WAFU 2045	384.3	692.5	MI/d
Catchment PWS RA as % of water company WAFU (Base Year 2017-18)	12.1%	1.3%	%
Total WRMP projected 2045 demand-side and leakage savings	23.8	43.3	MI/d
2045 demand reductions and leakage savings as % of current total water into supply	5.8%	6.1%	%
WRMP preferred additional supply-side options (catchment total)	0.0	0.0	MI/d

	Wessex Water	South West Water*	Unit
EA 2050 potential abstraction reductions (catchment total)	-33.5	-2.5	MI/d
<b>Potential 2050 catchment supply loss, reduced by the effect of proportional 2045 demand reductions and leakage savings</b>	<b>-30.6</b>	<b>-1.9</b>	<b>MI/d</b>
<b>Potential 2050 catchment supply loss (% of abstraction)</b>	<b>-62.0%</b>	<b>-20.9%</b>	<b>%</b>

\*South West Water also need to consider options to reduce summer abstraction from the neighbouring lower Avon by around 70 MI/d.  
Data sources:

Wessex Water (2019). Final water resources management plan.

South West Water Bournemouth Water (2019). Final Water Resources Management Plan.

## 4. Environmental Destination catchment plan to increase future water supply and low flow environmental resilience

The core Environmental Destination work has highlighted the potential constraints to water resource availability in the 2050s. Adapting to the future twin pressures of climate change and demographic change will require holistic approaches to sustainable environmental improvement.

This section sets the context of the relevant projects already underway or soon to be implemented in the Dorset Stour catchment, that include measures which will improve the resilience of the water resource for both public supplies and the environment. It also summarises wider catchment soil, land management, drainage restoration and nature-based initiatives which are important for the real biodiversity and water quality benefits they can deliver but are not expected to significantly change the decline in river low flows as temperatures warm.

A catchment plan is documented to set out and prioritise the water company measures best suited to achieve future flow and supply resilience as part of improving biodiversity outcomes in the catchment.

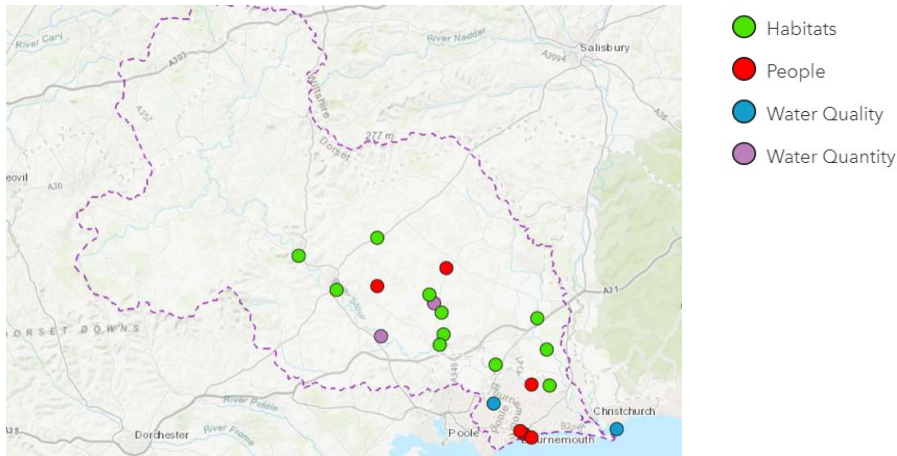
### 4.1 Current projects in the catchment

The Dorset catchment partnerships set up to promote the catchment-based approach (CaBA) include the **Stour Catchment Initiative<sup>7</sup> (SCI)**, which has been co-hosted by Wessex Water and Dorset Wildlife Trust since 2013.

The SCI is a collaborative partnership of a range of groups, aiming to use a catchment-based approach to improve the water environment of the Stour. Members also include South West Water, Natural England, Environment Agency, Dorset Council, BCP Council, National Trust, RSPB Wessex Rivers Trust, National Farmers Union, FWAG SW and other local farms and groups. Project locations to date are shown on **Graphic 4.1**.

---

<sup>7</sup> <https://www.wessexwater.co.uk/stour>

Graphic 4.1 Stour Catchment Initiative projects<sup>8</sup>

Projects currently being implemented, or recently completed in the Dorset Stour catchment include:

- **Stour Headwaters Project.** Ongoing Environment Agency/Dorset Catchment Partnership project being implemented by FWAG. Working with farmers on a one-to-one basis aiming to improve water quality, reduce flood risk, increase biodiversity and improve farming efficiency. The focus is particularly in reducing sediment and pollution runoff in the higher topography headwaters, mainly via NFM measures but also including restoration, for example, recontouring for leaky dams, daylighting culverts.
- **Moors River Restoration.** Current Environment Agency-led project to undertake chalk stream restoration according to the Moors River Restoration Plan (Environment Agency 2019a). This work is being undertaken in various reaches of the river to achieve WDF Good Ecological Status, including floodplain reconnection schemes to hold water back, and revegetation.
- The Wessex '**Stage Zero' floodplain reconnection** opportunity mapping project has recently been completed (EA and Dorset Wildlife Trust, 2021). This has included mapping of the Frome, Piddle, Stour and Corfe to define the unconstrained bottom of the valley floor including areas outside the current floodplain, of importance in designing future Natural Flood Management (NFM) measures in the catchment.

## 4.2 Future planned projects

A **draft Dorset Stour Catchment Strategy** is currently under production by the Environment Agency to holistically bring together and align planned future work in the catchment (Keith Calder, *pers. comm*). This includes:

- Expansion of the Environment Agency Stour Headwaters Project to include neighbouring **Wessex headwater catchments** as part of a wider strategic initiative to regenerate and improve soil health, reduce soil loss and reduce pollution in this area.

<sup>8</sup> Based on interactive project map at <https://gis-services.wessexwater.co.uk/Storymaps/Environment/Stour/>



- Further **chalk stream restoration** across the Chalk outcrop in line with the Chalk Stream Restoration Strategy (CaBA, 2021). To include the **Middle and Lower Stour** as per the Middle and Lower Stour Restoration Strategy (Environment Agency, 2019b), which will address various reaches of the river to achieve WDF Good Ecological Status, including floodplain reconnection schemes to hold water back, and revegetation. Also, the **Tarrant Valley** which is a priority target for restoration to remove physical concrete structures, which currently lead to upstream ponding that results in the need for fish rescue.
- **Biodiversity projects** in the lower catchment. Including creation of the **Stour Valley Park**, a proposed park and trail along the Lower Stour river corridor between Kingston Lacy and Hengistbury Head (led by Dorset Council and BCP Council). This would be a valuable eco-corridor that would include riparian habitat restoration and habitat links, with predicted improvements in water quality, flood alleviation, biodiversity and increase in carbon capture.
- **Local projects** to improve and re-connect the riparian area along the Stour where local landowners are interested in more positive environmental outcomes, which may include National Trust Kingston Lacey and Deans Court, Wimbourne.
- The **Lower Stour flood project** to manage flooding in the lower Stour catchment, a key area of focus for the Environment Agency. Surveys and investigations have been undertaken, although a strategy is yet to be agreed and implemented.
- The Environment Agency also has interest in future local **peatland restoration** in Dorset and is currently looking at funding research to steer future investigations in this area.

Other future work of relevance in the Dorset Stour catchment also includes:

- The potential future **beaver reintroduction** and management in England, which is currently under consultation (Defra, 2021). Initial trials elsewhere have shown overall benefits in terms of their role as 'ecosystem engineers', where dam building and burrowing can redirect water flows and create wetland habitats. Although no projects are as yet planned, it is possible that beavers will be re-introduced in the Stour in the future.
- Future plans by EnTrade (supported by Wessex Water & FWAG) to operate **Catchment Markets** in the Stour (as they currently do in Somerset) to improve water quality and biodiversity through on-farm nature-based projects. Including cover crops, planting of hedgerows and woodland, livestock watercourse exclusion fencing, wetland creation, buffer strips and arable reversion to species rich grassland.

### 4.3 CaBA opportunity mapping: a resource for future projects

CaBA's opportunity maps from the '**Working with Natural Processes - Evidence Base**' project<sup>9</sup> identify the types of measure that may be effective in flood and coastal risk management (FCRM) and wider ecosystem service benefits (Environment Agency, 2018). These maps can be used to inform and prioritise future catchment measures.

**Figure A4.1** shows the opportunity mapping across the Dorset Stour catchment for:

<sup>9</sup> <https://catchmentbasedapproach.org/learn/working-with-natural-processes-evidence-base/>

- Floodplain reconnection (for example, in the headwaters of the River Cale and along winterbournes on the Chalk).
- Tree planting in riparian areas (identified everywhere along the river network).
- Countryside stewardship options (for example, buffer strips, wildlife strips, regeneration of habitats, livestock fencing, coppicing of bankside trees, hedgerows).
- Priority habitat creation projects (at individual locations to create or restore habitats, for example the Dorset Ponds project in the headwaters of the upper Stour).

Wider scale implementation of these CaBA opportunities will help to deliver biodiversity and water quality benefits. Local channel, drainage and floodplain habitat restoration projects will also provide a vital role in improving the ecological resilience to droughts and dry periods. However, neither catchment-wide nor local habitat initiatives are expected to make much difference to river low flows, or to change the projected environmental flow deficits in the water bodies with abstraction pressures highlighted by the Environmental Ambition challenge.

#### 4.4 WCWR Dorset Stour catchment action plan

As is evident, good work is already underway and planned by catchment stakeholders in the Dorset Stour to improve its biodiversity resilience from multiple angles.

The Chalk winterbourne nature of many of the upper reaches in the Dorset Stour catchment means that there will be times of the year that these will dry naturally, even if abstraction is reduced. Therefore, future water company measures should focus on actions to tackle low flows further downstream and increase available storage.

Consultation with WCWR during this project has contributed to the development of a **strategic action plan of water company measures that could be implemented in a phased approach**, tabulated in

**Table 4.1.** This plan has been sketched out to add supply-side options to the existing preferred demand management and leakage reduction measures in order to support *increased* abstraction by up to 70Ml/d from the lower Stour in order to reduce summer pressures on the neighbouring lower Avon. However, these water resources measures would also work in synergy and holistically with the wider catchment projects, all building resilience for the Dorset Stour itself. A phased implementation should deliver incremental benefits along the way and would require step-wise changes in abstraction regulation.

Schematic maps in **Figures A4.2** to **A4.4** show how the large-scale water company measures may be implemented over the short, medium, and long term. They also show how these link to the different environmental issues in the headwaters, main Chalk outcrop and lower catchment, and also how measures may contribute to improvements in the areas of potential 2050 flow deficits identified by the Environment Agency's Environmental Ambition modelling. Beyond the broader scale plan for the middle and lower catchment local investigations should also consider how to reduce abstraction pressures in the headwater catchment downstream of the Mere groundwater source.

Table 4.1 Phased water resources resilience action plan to 2050 for the Dorset Stour (and lower River Avon)

Category	Option category	Measure	Additional supply (to relieve the lower Avon)	Location	Issues being targeted	Short term	Medium term	Long term
<b>AMP7/8 Investments</b>	Planned water treatment works enhancements	Optimise existing and new phosphorus removal plants Catchment interventions to reduce P (e.g. EnTrade)	NA	Upper headwaters	Water quality (Phosphate)	■		
	WINEP studies	Updated river water quality modelling. Migrate Wimborne licence to Longham			Reduce River Allen flow risks			
<b>Enhancing existing/new infrastructure</b>	Reduce Avon abstraction; Smarter use of Stour sources; Infrastructure improvements	Conjunctive use between Stanbridge and Longham to deliver low flow benefit <b>No regrets investments</b>	6 MI/d (at higher flows)	River Allen	Improved low flow resilience of the River Allen.. Also allow more abstraction of better quality winter water at higher flows.		■	
<b>Local sources of water</b>	Effluent recycling of Poole STW	Relocation of the Poole STW discharge to the River Stour – ideally at Corfe Mullen or further upstream to offset middle Stour deficits as well as supporting Longham.	30MI/d all the time?	River Stour	Improved low flows in the River Stour, improved water quality of discharge. Also creates opportunity for wetland creation in the flood plain.		■	
	Aquifer Storage Recovery (ASR) at Longham	Increase dry period supply through storage of high Chalk flows in confined aquifer for use in dry periods	10 MI/d during summer?	Longham	Increased storage, use excess winter chalk water from Matchams			
<b>Regional solutions</b>	New storage reservoir(s) in upper catchments	Capture higher flows to mitigate some flood risks and increase dry period low flow support to the middle and lower reaches of the Stour	30 MI/d during summer?	Upper Stour	Support low flows in the Stour downstream, flood risk reduction, create lake and wetland habitats			■

Category	Option category	Measure	Additional supply (to relieve the lower Avon)	Location	Issues being targeted	Short term	Medium term	Long term
	(Desalination	Not preferred)						

## 5. References

- Catchment Based Approach CaBA (2021). Chalk Stream Restoration Strategy.
- Dorset Council (July 2021). Water. Detailed Technical Paper.
- Environment Agency (2012). Dorset Stour Catchment Flood Management Plan.
- Environment Agency (May 2019a). Middle and Lower Stour: Reach by Reach Restoration Plan.
- Environment Agency (May 2019b). Moors River System: Reach by Reach Restoration Plan.
- Environment Agency (2020a). Dorset: abstraction licensing strategy.
- Environment Agency (March 2020b). Meeting our future water needs: a national framework for water resources. Version 1.
- Environment Agency (2018). Working with Natural Processes – Evidence Directory. SC150005
- Natural England (1999) SSSI Designation for Moors River System.
- Wessex Water (2019). Final Water Resources Management Plan.
- South West Water Bournemouth Water (2019). Final Water Resources Management Plan.

## 6. Figures

wood.

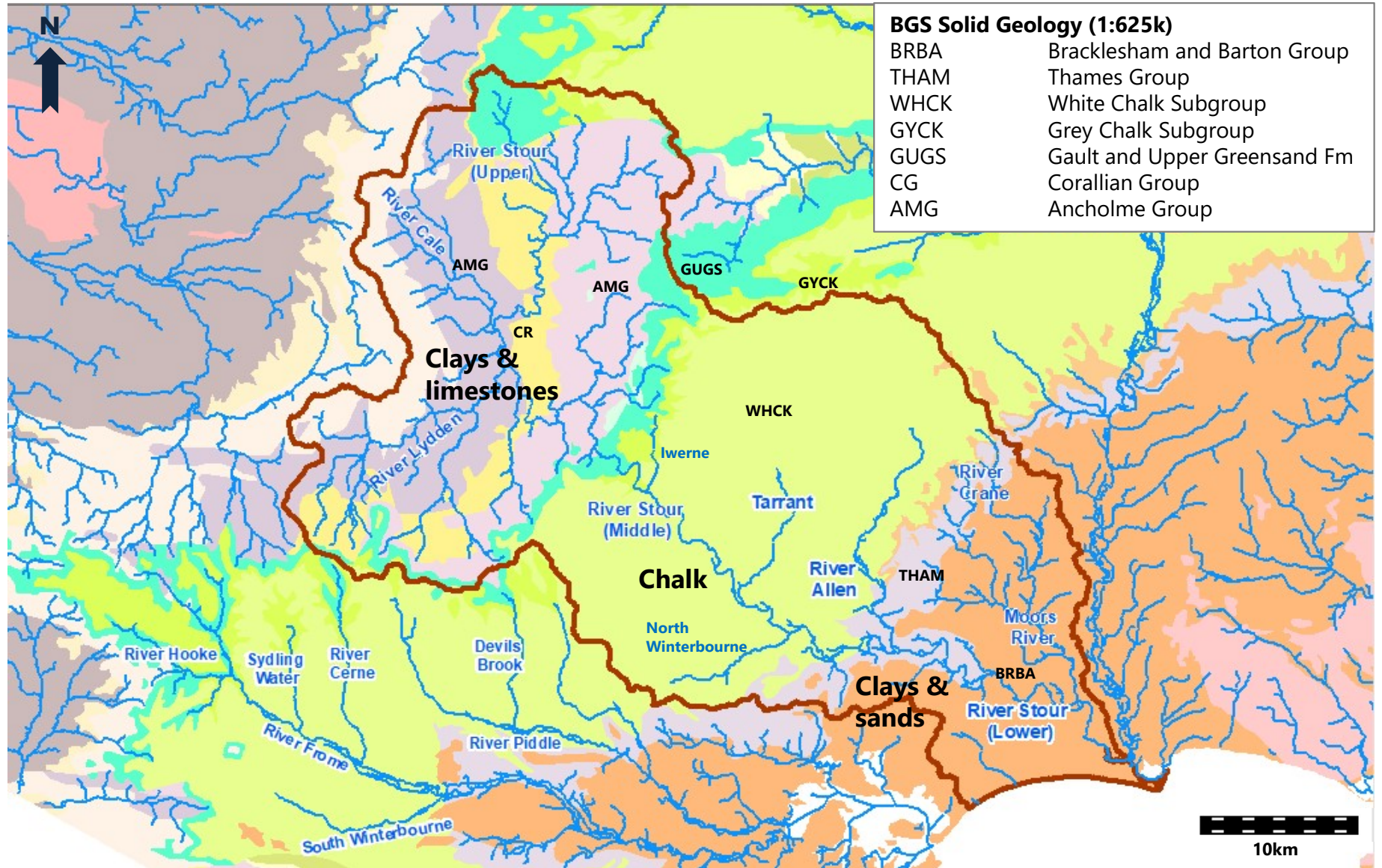




## Environmental Destination

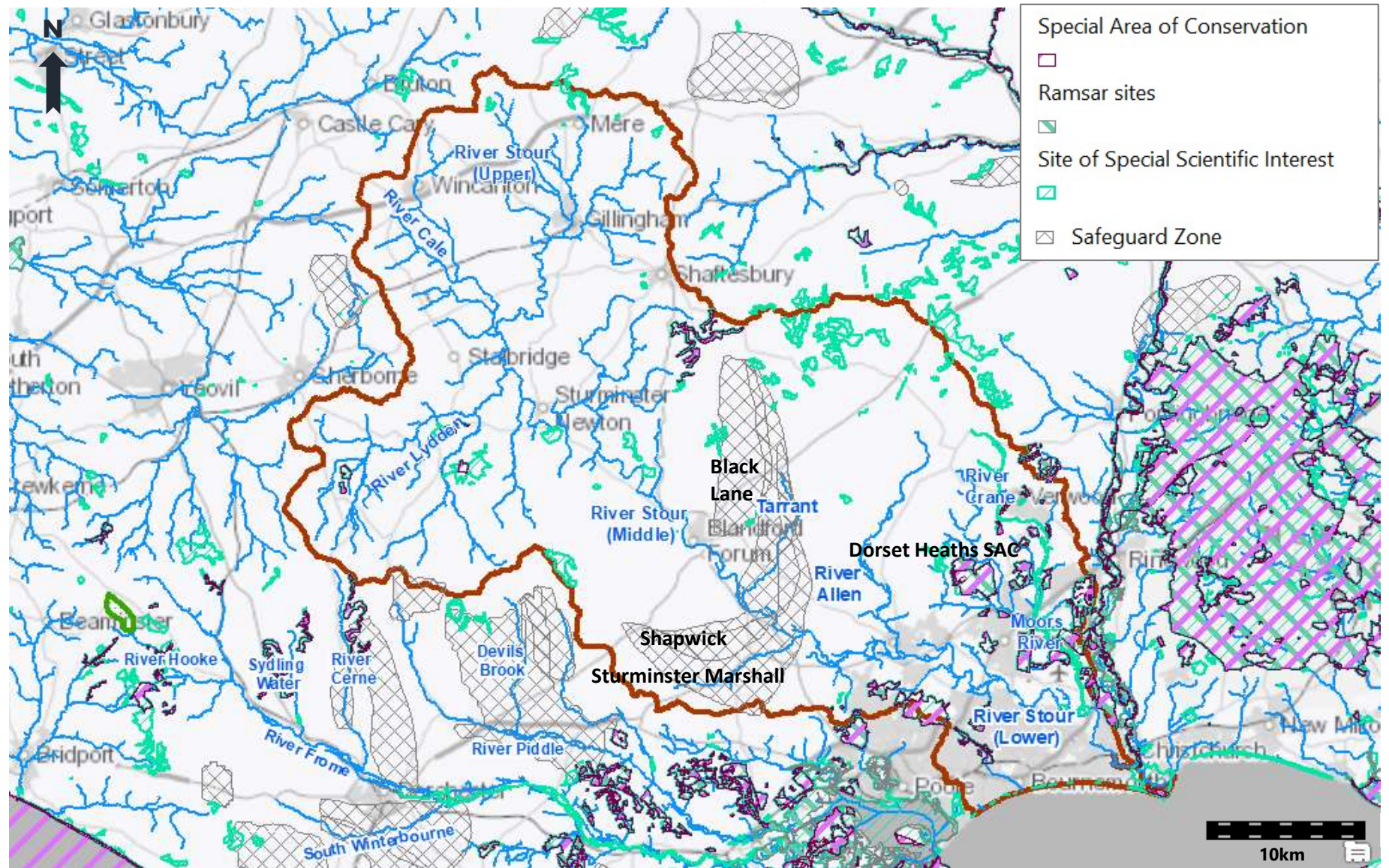
Figures accompanying Annex A: Dorset Stour Pilot Catchment Plan to increase future water supply and environmental low flow resilience

**Figure A2.1 Dorset Stour catchment: rivers and geology**



Contains British Geological Survey materials © UKRI [2021]. Contains Ordnance Survey data © Crown copyright and database right [2021].

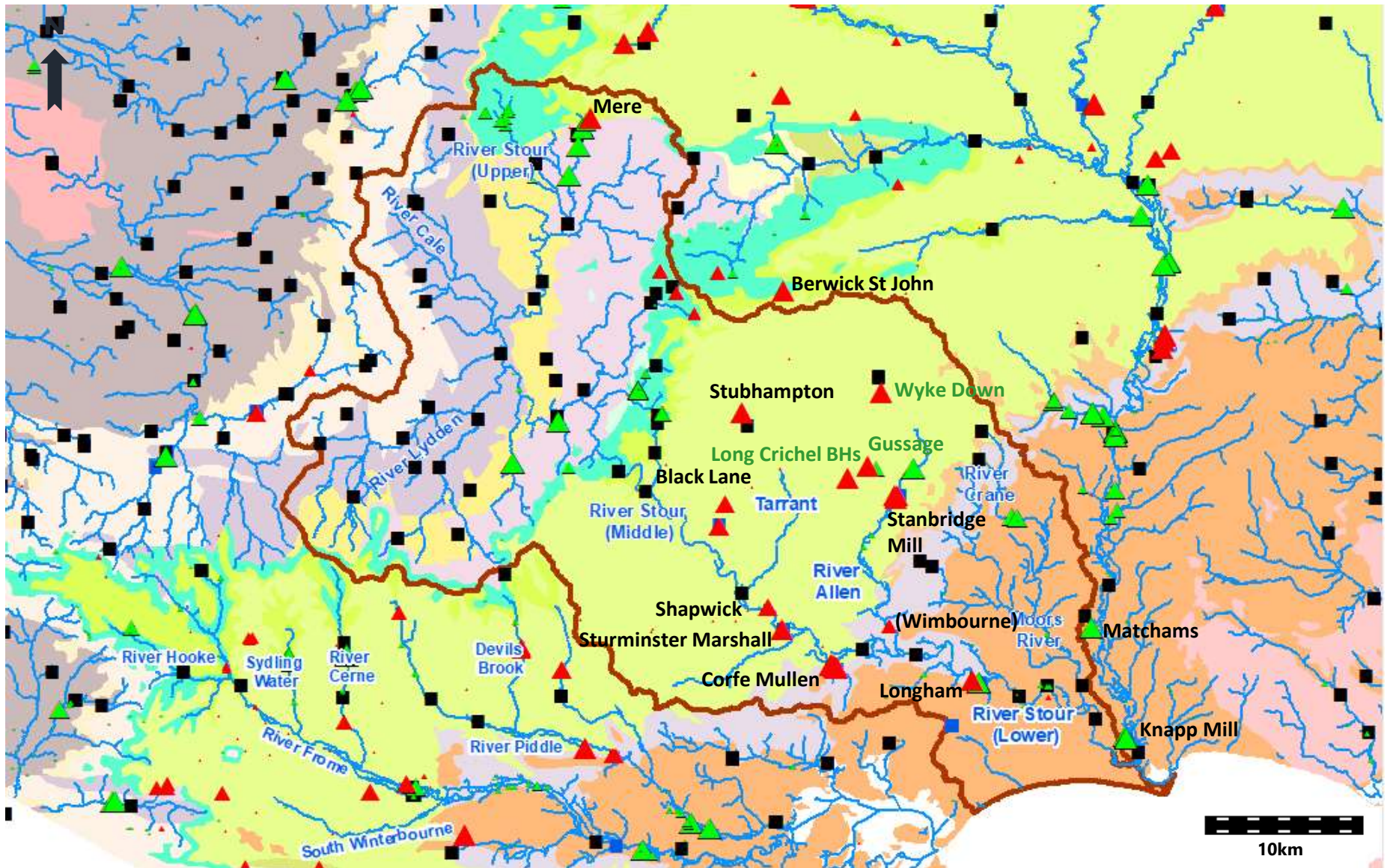
**Figure A2.2 Dorset Stour catchment: Designated sites and Drinking Water Safeguard Zones**



© Natural England copyright. Contains Ordnance Survey data © Crown copyright and database right [2021].

**Annex A: Dorset Stour Catchment Plan to increase water supply and environmental resilience**  
 Reference 807434-WOOD-WRG-DS-FG-OW-0001\_S0\_P01.1

**Figure A2.3 Dorset Stour catchment: PWS Groundwater abstractions, Surface water abstractions, and WwTW Surface water discharges**



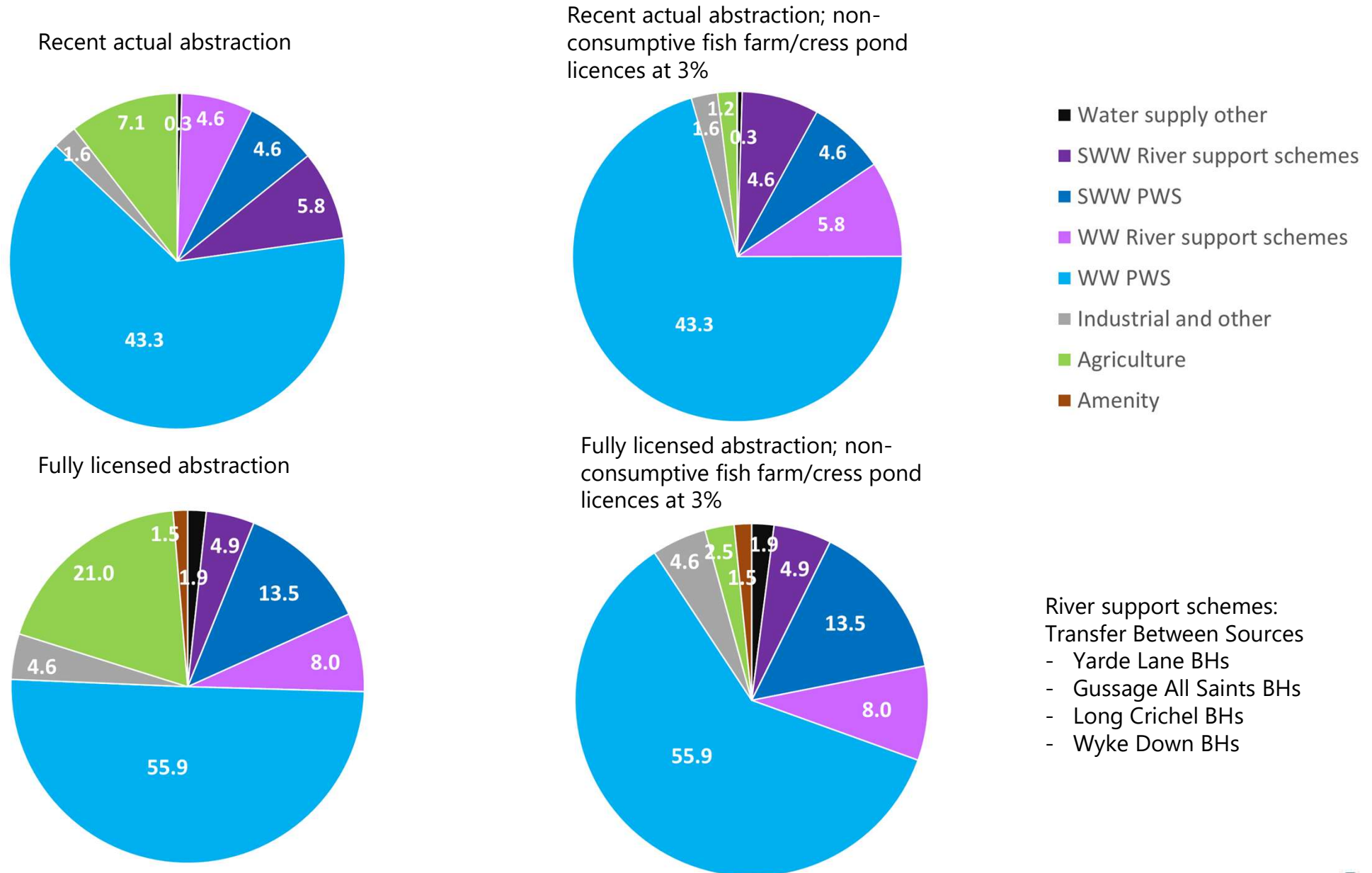
Contains British Geological Survey materials © UKRI [2021]. Contains Ordnance Survey data © Crown copyright and database right [2021].

Abstraction data downloaded June 2021 from Catchment Based Approach Data Hub website

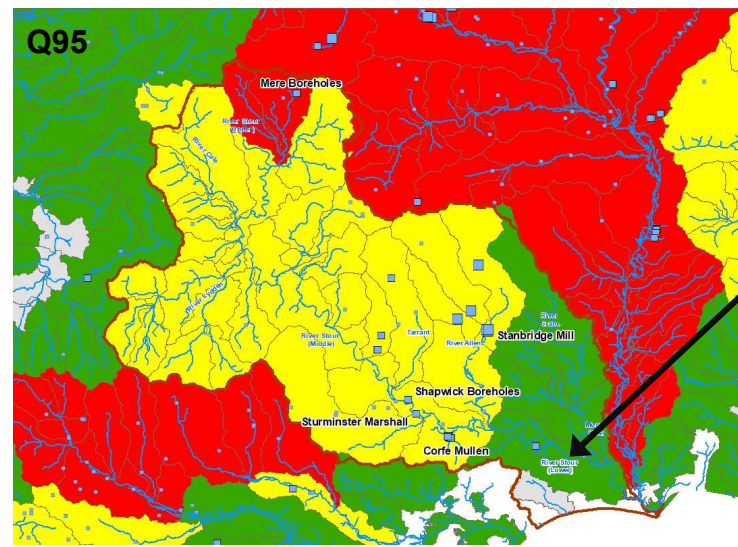
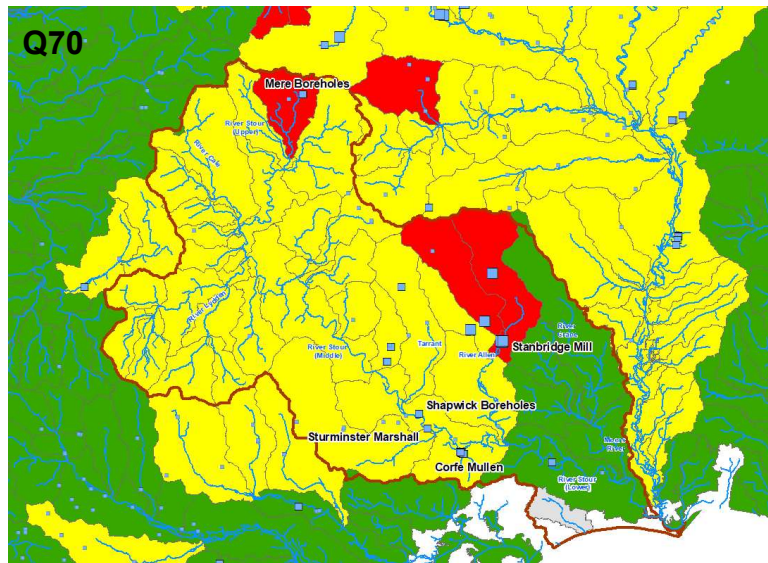
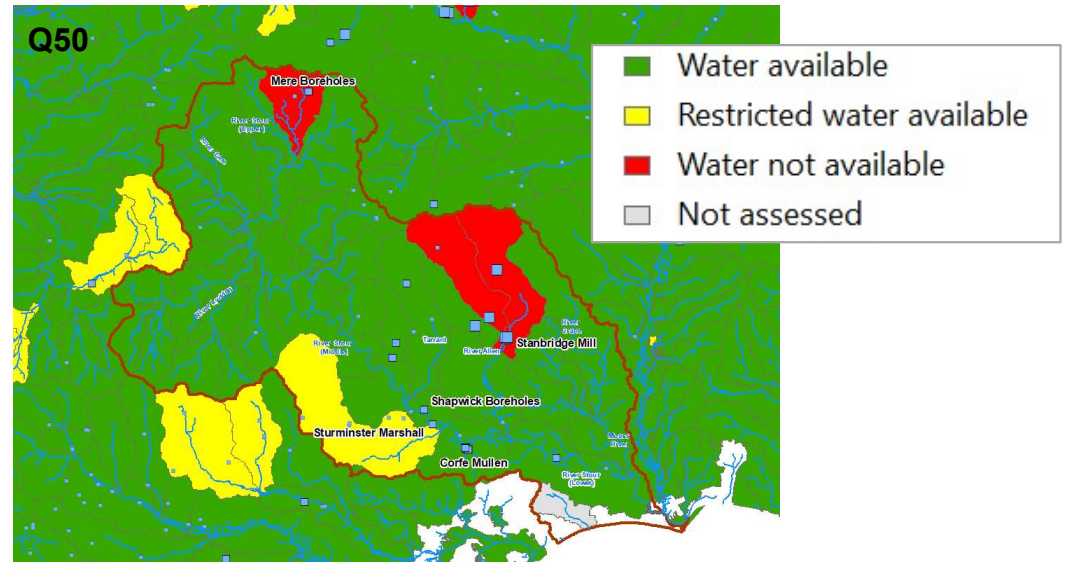
**Annex A: Dorset Stour Catchment Plan to increase water supply and environmental resilience**

Reference 807434-WOOD-WRG-DS-FG-OW-0001\_S0\_P01.1

**Figure A2.4 Dorset Stour catchment: Groundwater abstraction by sector (total, MI/d)**



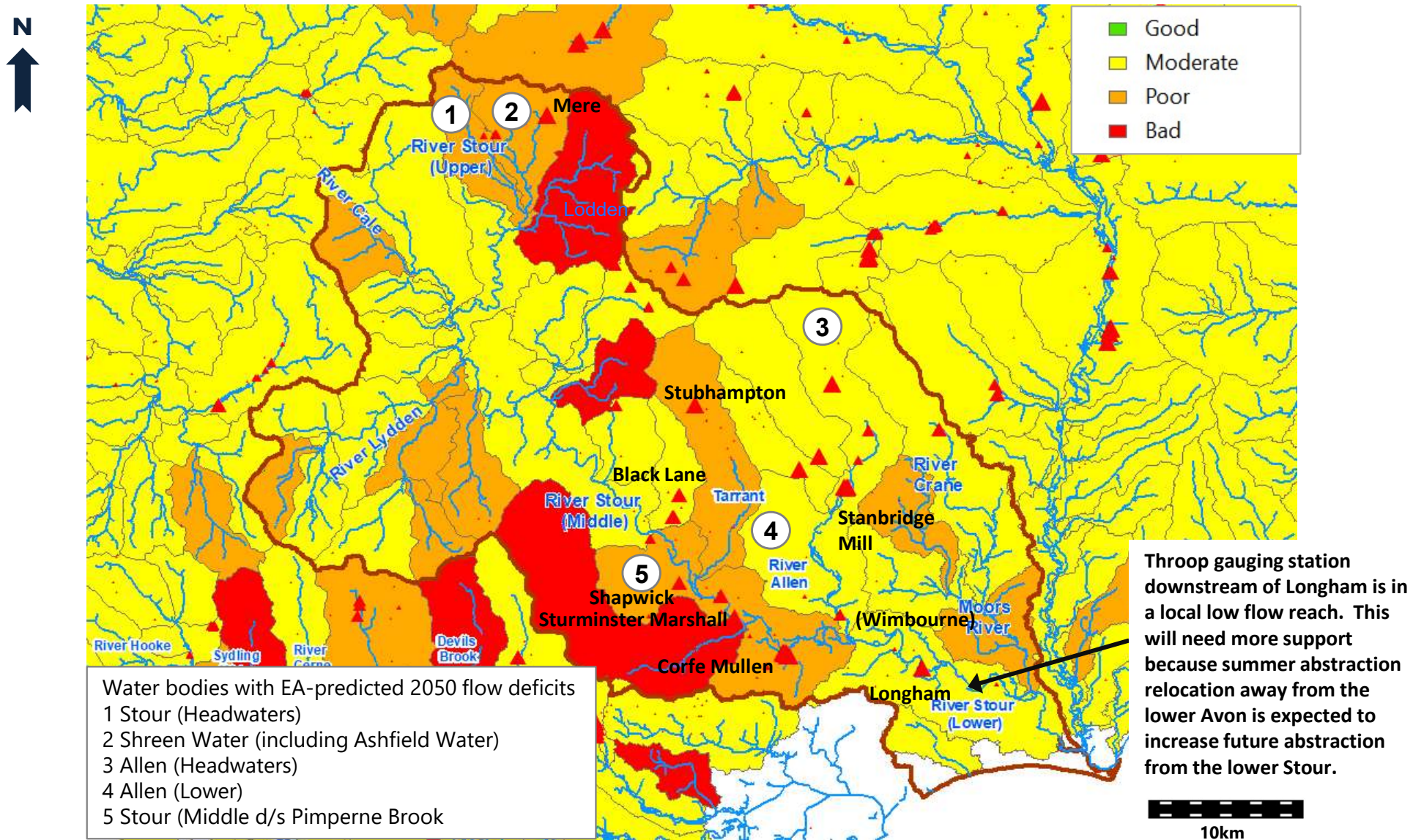
**Figure A2.5 Environment Agency water resource availability at Q30, 50, 70, 95 for river water bodies (last updated 16 April 2021)**



Throop gauging station downstream of Longham is in a local low flow reach. This will need more support because summer abstraction relocation away from the lower Avon is expected to increase future abstraction from the lower Stour.

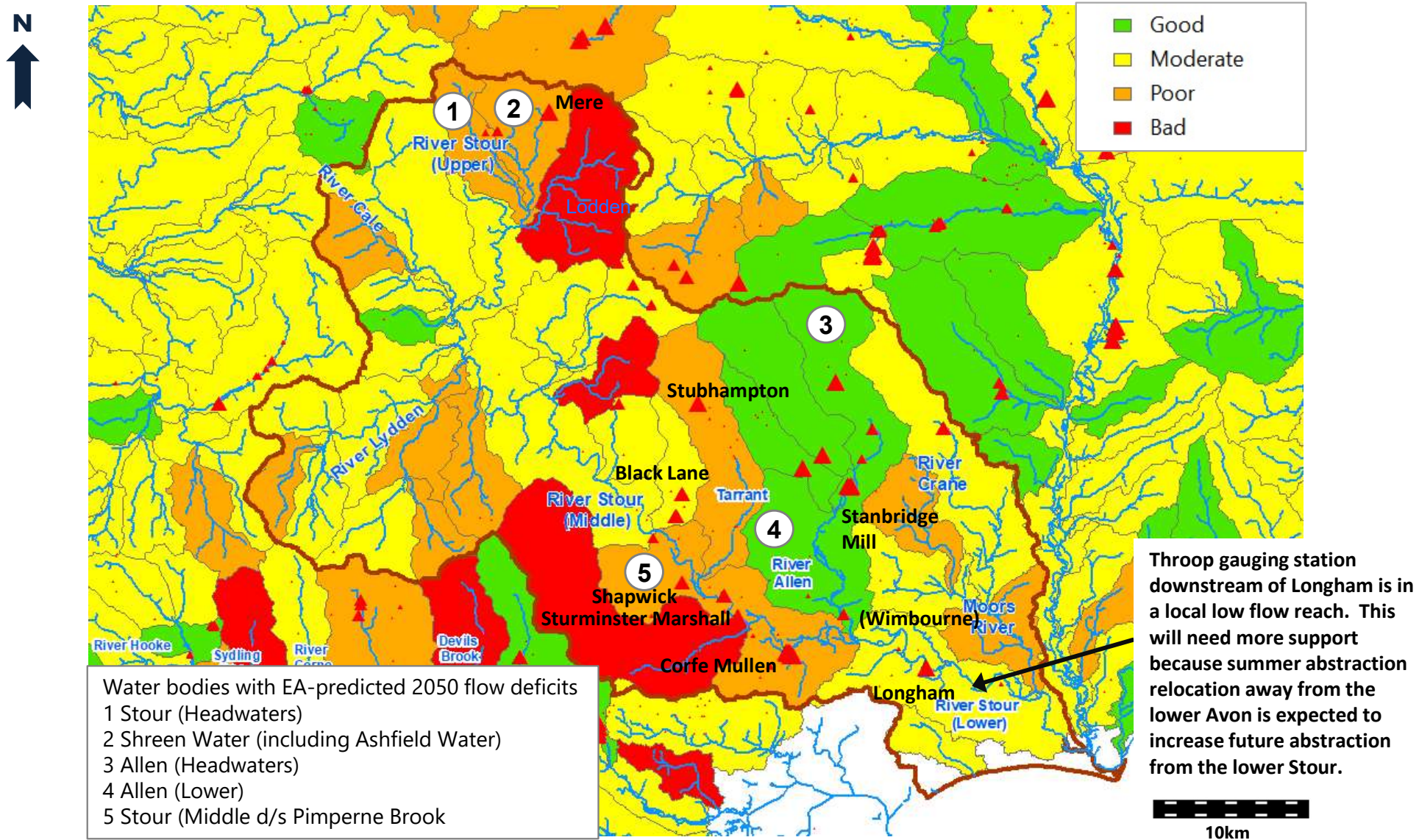
Contains public sector information licensed under the Open Government Licence v3.0. © Crown Copyright 2021

Figure A2.6 WFD water body overall status (i.e. chemical + ecological, Cycle 2, 2019)



Contains public sector information licensed under the Open Government Licence v3.0. © Crown Copyright 2021

Figure A2.7 WFD water body ecological status (Cycle 2, 2019)

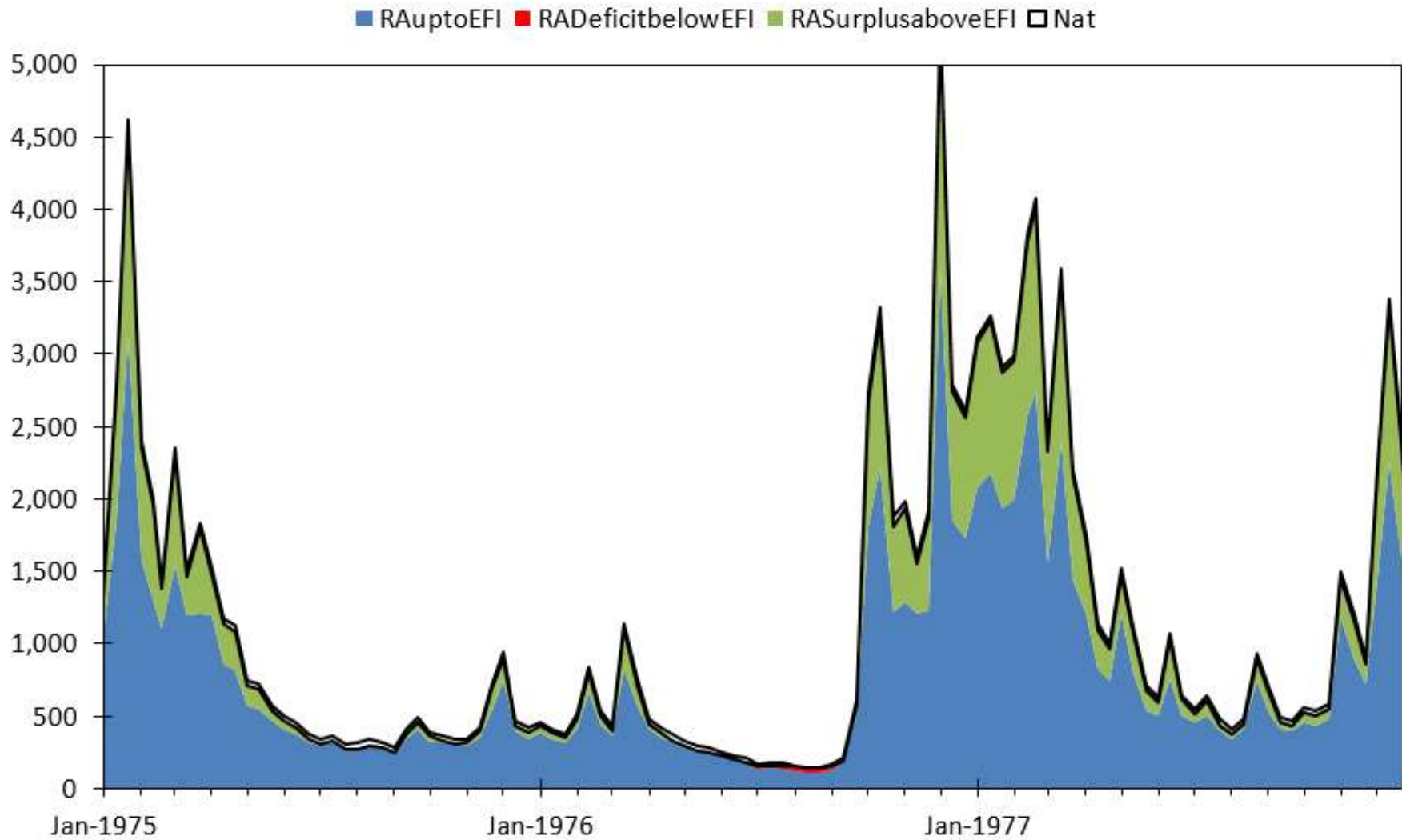


Contains public sector information licensed under the Open Government Licence v3.0. © Crown Copyright 2021



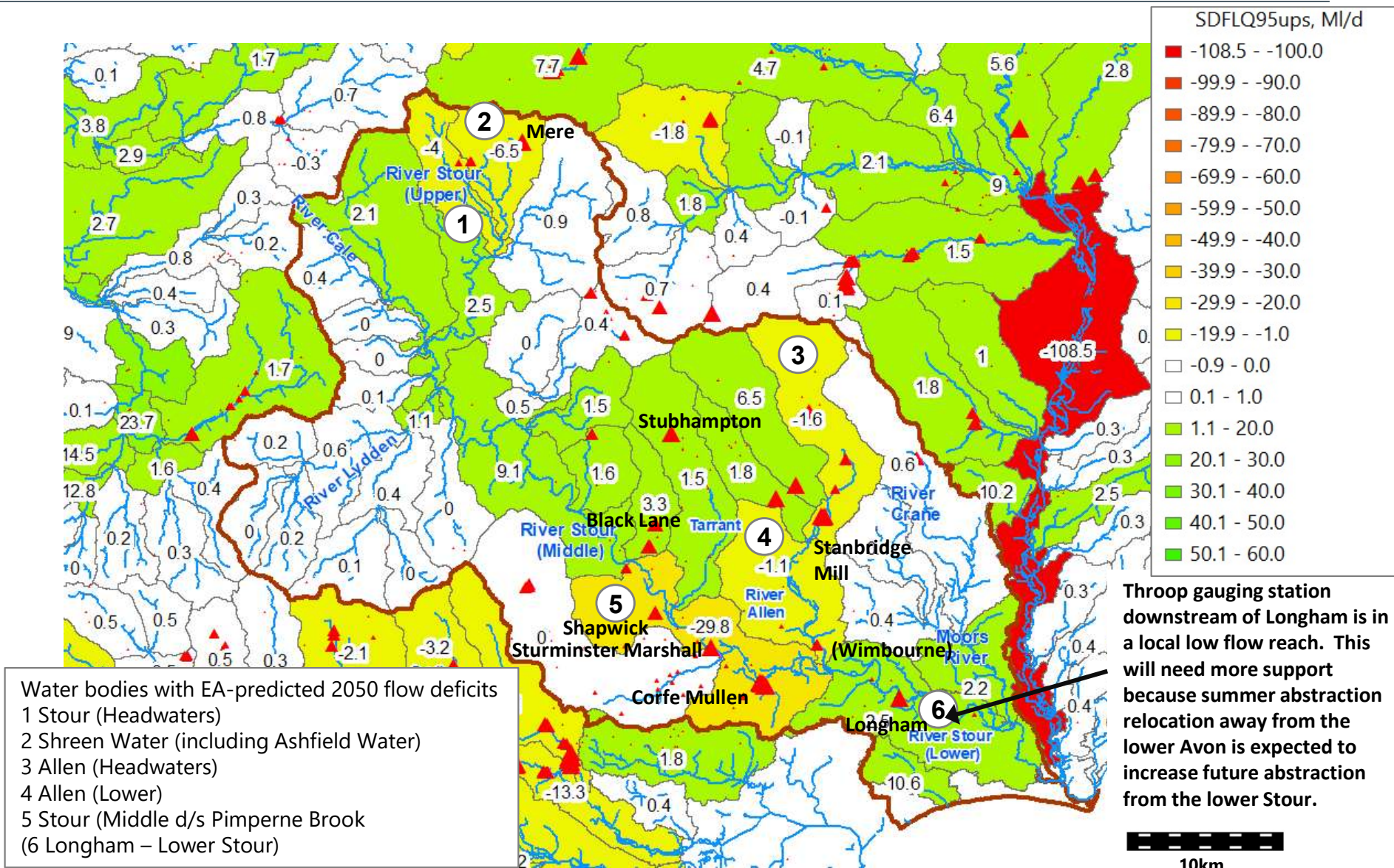
**Figure A2.8 Recent Actual environmental flow surpluses & deficits at Throop around the 1976 drought indicating the need for low flow support or seasonal storage**

River Stour at Throop Natural and Recent Actual Flows with EFI ASB3 **Deficit** and **Surplus**



Model stress periods ~10 days, historical climate, Nat run swsx494, RA run swsx518

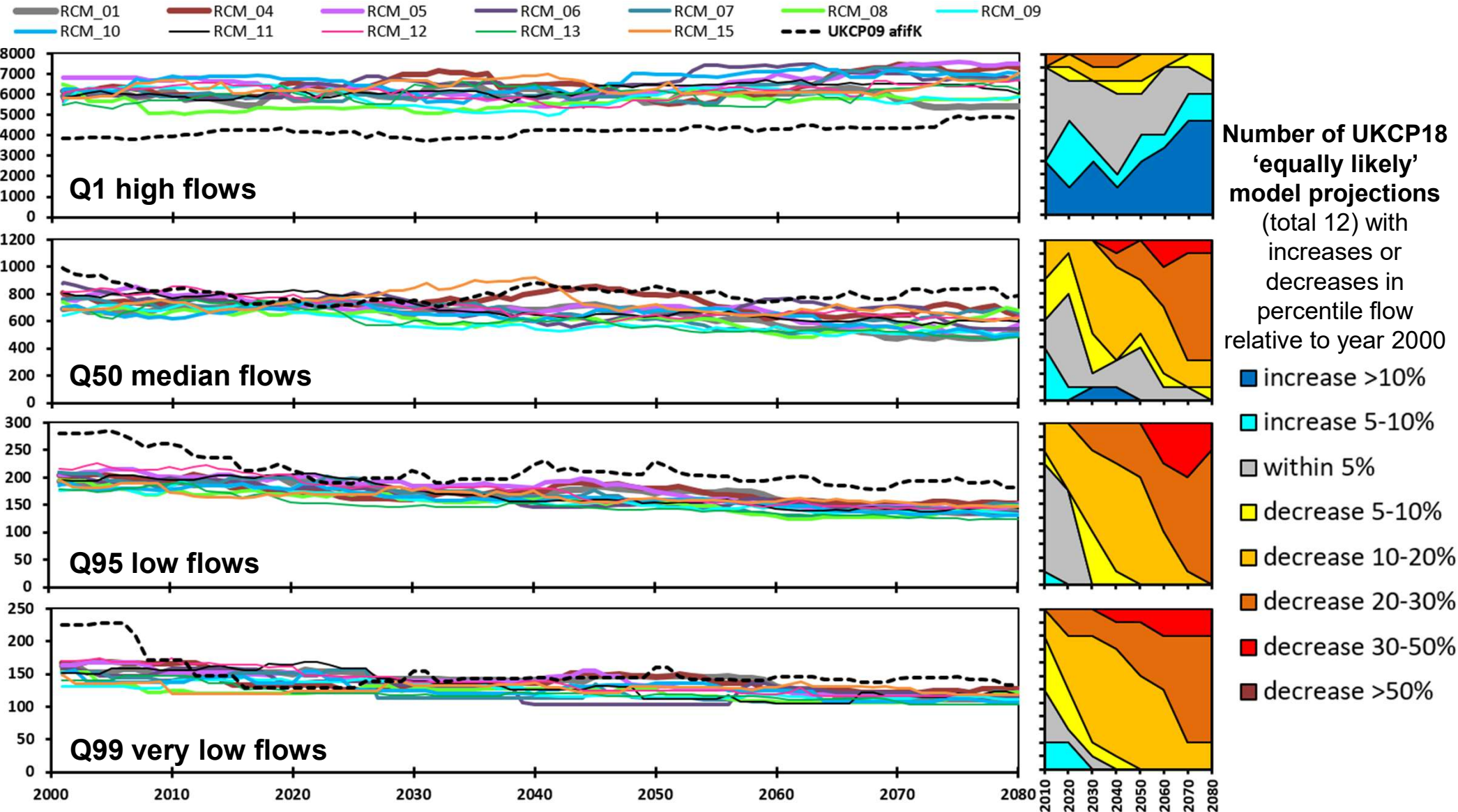
**Figure A3.1 EA predicted fully licensed 2050 flow surpluses and flow deficits (MI/d) for water bodies under Q95 low flow conditions (enhanced scenario)**



Data from EA's National Framework modelling in 2020

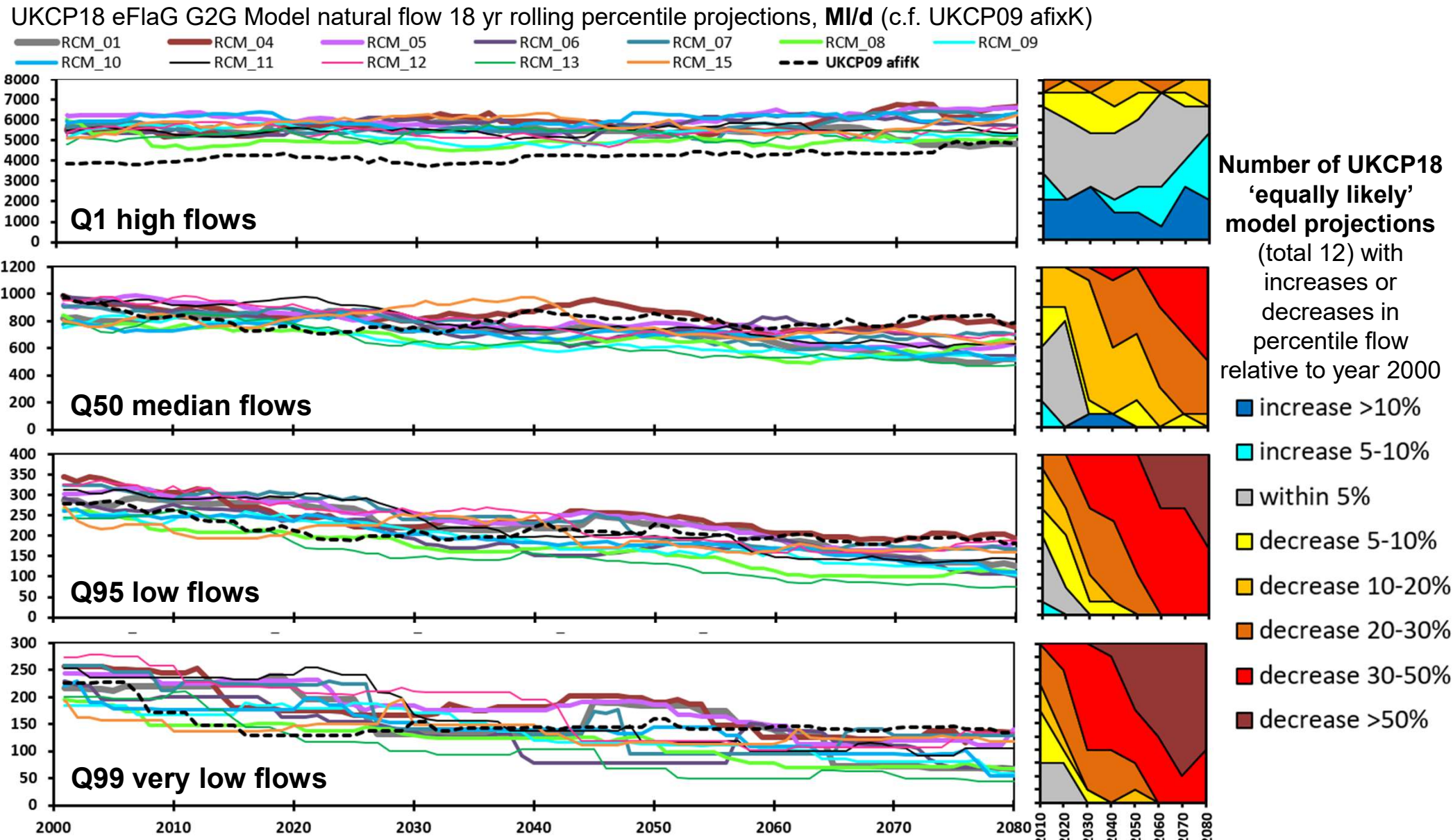
# Figure A3.2 Flow changes expected due to climate (Dorset Stour at Throop): Projections from UKCP18 climate & PDM gauge-calibrated river flow models

UKCP18 eFlaG PDM gauge-calibrated model flow 18 yr rolling percentile projections, MI/d (c.f. UKCP09 afixK)



Data source: natural flows from 12 equally likely UKCP18 regional climate models (with UKCP09 afixK natural projection for comparison):

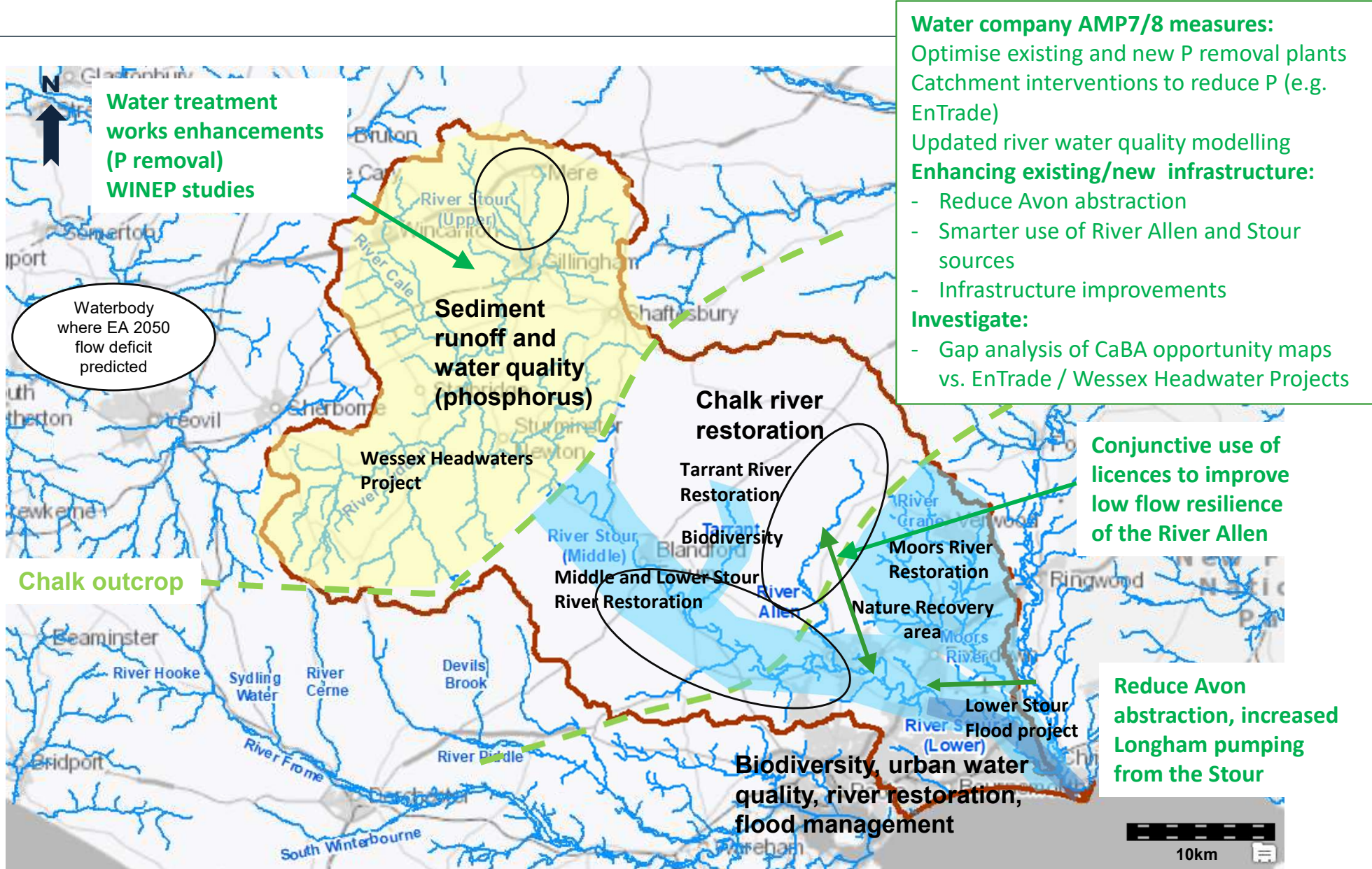
# Figure A3.3 Flow changes expected due to climate (Dorset Stour at Throop): Projections from UKCP18 climate & G2G national natural river flow models



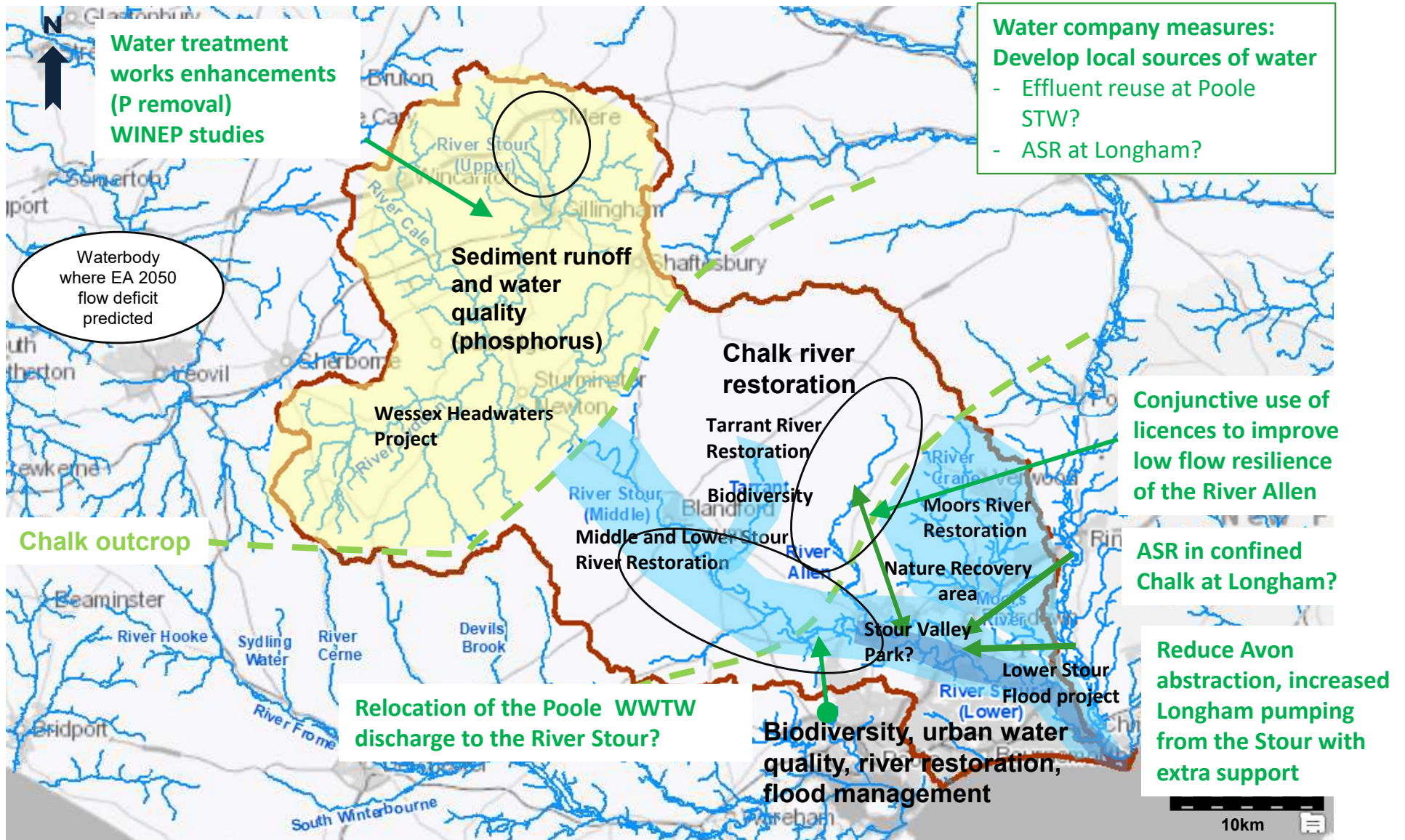
Data source: natural flows from 12 equally likely UKCP18 regional climate models (with UKCP09 afixK natural projection for comparison): <https://eidc.ac.uk/>



**Figure A4.2 Short term 2030 catchment measures: Dorset Stour**



**Figure A4.3 Medium term 2040 catchment measures: Dorset Stour**



**Figure A4.4 Long term 2050 catchment measures: Dorset Stour**

