






 application site boundary

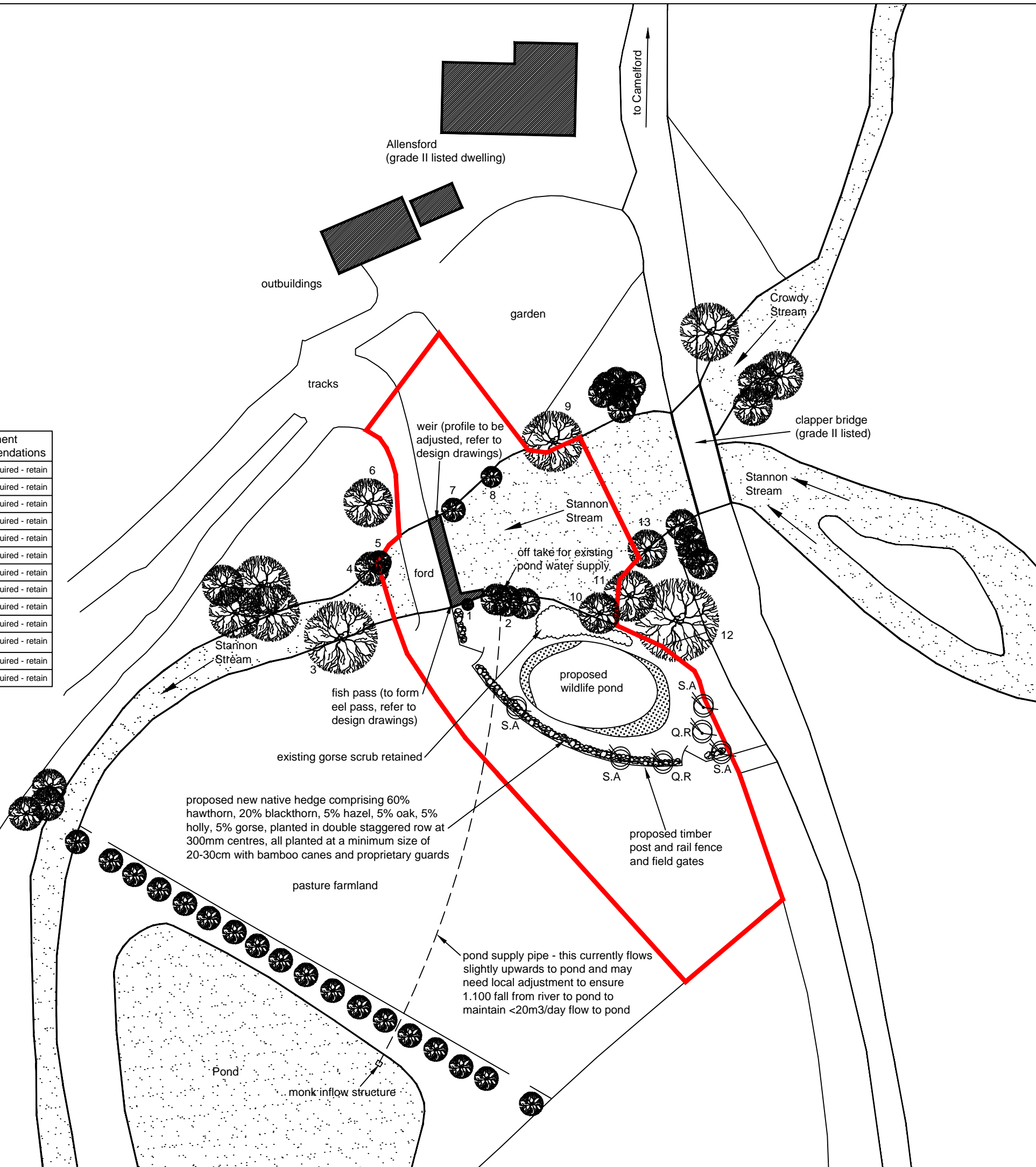
 existing tree, refer to tree schedule below

 proposed tree, SA = Rowan, QR = Oak, all planted at a minimum size of 1.2m high

 proposed wildlife pond
 proposed pond, approx. 900mm deep with marginal shelves shown hatched. Marginal shelves to be planted with appropriate locally native plant species

Tree Survey Schedule

Ref.	Species	Ht. (m)	TD (mm)	Age	CAT	Sub CAT	ULE	Con.	Management Recommendations
1	Ash	4	50	Y	C	2	1	G	no action required - retain
2	Willow	6	multi (80)	MA	C	2	2	F	no action required - retain
3	Ash	10	270	MA	B	2	3	F	no action required - retain
4	Ash	9	150	Y	C	2	3	G	no action required - retain
5	Sycamore	6	70	Y	C	2	3	G	no action required - retain
6	Ash	6	100	Y	C	2	3	F	no action required - retain
7	Ash	3	multi (>50)	MA	C	2	1	P	no action required - retain
8	Sycamore	4	multi (>50)	MA	C	2	2	F	no action required - retain
9	Willow	6	multi (100)	MA	C	2	2	G	no action required - retain
10	Willow	6	300	MA	C	2	2	G	no action required - retain
11	Sweet Chestnut	12	350	M	B	2	4	G	no action required - retain
12	Conifer spp.	13	2 x 400	M	B	2	3	G	no action required - retain
13	Rhodo. spp.	4	multi (100)	M	C	2	2	G	no action required - retain



ALLENSFORD WEIR

Proposed works to Allensford Weir comprising partial lowering of weir and the construction of low flow notch an eel pass.

Allensford 03
 Site Block Plan
 June 2018

1:500 @ A3