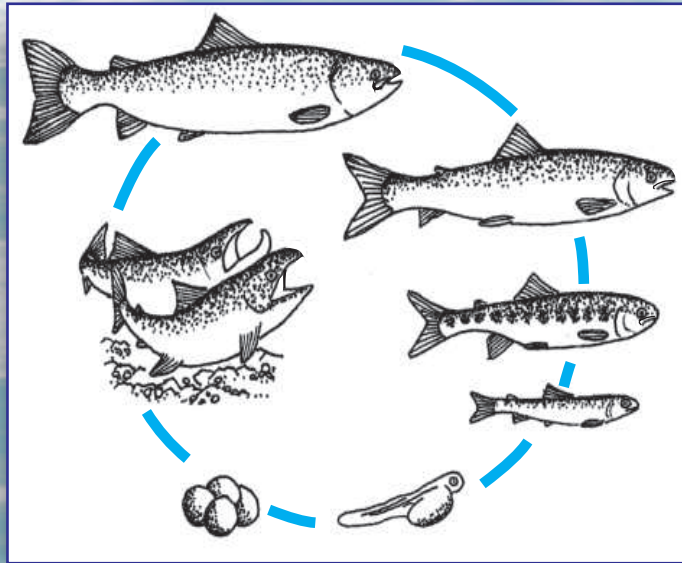
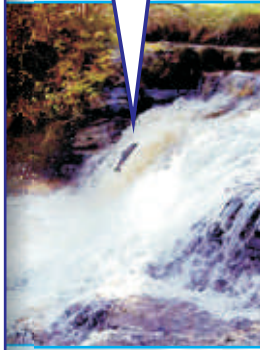


It's a hard life being a Salmon!



Which way
to the
Tamar?



ARE YOU READY TO GET WET FEET?



SALMON LIFE CYCLE

See if you can add arrow heads and label the picture with the different stages **A - G** of the Salmon life cycle....

- A. The **Adult Salmon** return from feeding at sea and swim up the river, in which they hatched, to breed.
- B. In the autumn the **female** salmon creates a pit in the gravel with her tail, known as a 'redd', she releases her eggs and the **male** releases his sperm on top of the eggs
- C. The fertilised **eggs** are covered with more gravel
- D. The eggs hatch into **alevin** in the spring and remain in the gravel feeding off their yolk sac.
- E. Eventually the alevin use up the yolk sac and become **fry**
- F. When the fry leave the site where they hatched they are known as **parr**
- G. When the fish have reached a certain size, which takes between 1 and 3 years, they prepare to run to sea and are called **smolts**

What's in YOUR river?

Turn the page and find out what
beasties are lurking in your river
with our identification key.



Westcountry
Rivers Trust

10 Exeter Street, Launceston
Cornwall PL15 9EQ
tel: 08707 740704
email: wetfeet@wrt.org.uk www.wrt.org.uk

The Westcountry Rivers Trust will soon be launching its junior programme.
If you would like more information, or would like to be involved, either write
to the Westcountry Rivers Trust or email: wetfeet@wrt.org.uk

River invertebrates identification Key

How clean is your river?

Discover how clean your river is by calculating the average score for the invertebrates you find.

1 to 3 = poor water quality
4 to 5 = good water quality
6 to 7 = excellent water quality

**START
HERE**

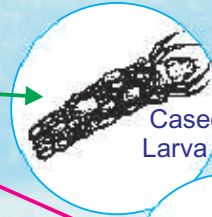
Does it have a shell or case?

NO YES

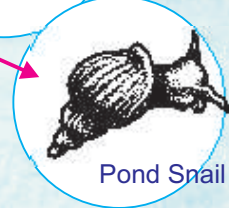
Is the case made of stones, leaves or twigs?

YES

NO



Cased Caddisfly Larva (7)



Pond Snail (3)

Does it have legs?

NO YES

Does it have 6 legs or less?

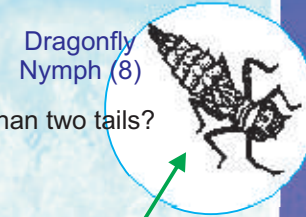
NO YES

Does it have one or more tails?

NO YES



Water Boatman (5)



Dragonfly Nymph (8)

Does it swim on its side?

NO YES

Does it have more than one tail?

NO YES

Does it have more than two tails?

NO YES

Are the tails short and stubby?

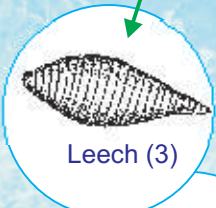
YES

NO

Is it long and thin with more than 15 body segments?

YES

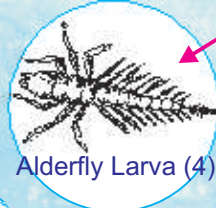
NO



Leech (3)



Water Louse (3)



Alderfly Larva (4)



Midge Larva (2)



Sludge Worm (1)



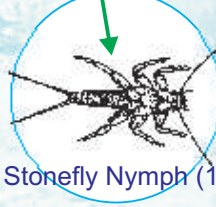
Freshwater Shrimp (6)

Are the tails longer than the body is wide?

NO YES



Caseless Caddisfly Larva (5)



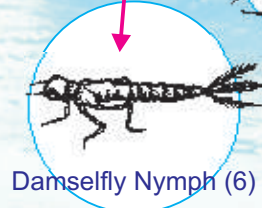
Stonefly Nymph (10)

Does it have feathery gills along each side or on its back?

NO YES

NO YES

Mayfly Nymph (8)



Damselfly Nymph (6)

An invertebrate is an animal without a backbone - like me!



Freshwater Shrimp

Some invertebrates, like me, cannot survive in polluted waters so have a high score of 10. Can you spot my high-scoring friends?



Stonefly Nymph



Sludge Worm

I can live in heavily polluted water with very little oxygen and so get a low score of 1

CLOSE-UP ON INVERTEBRATES

Use your new skills to find out which animal is shown in close up below!

